

# 2023 – 2024

# ANNUAL

# REPORT

---



Goulburn  
Murray  
*Landcare*

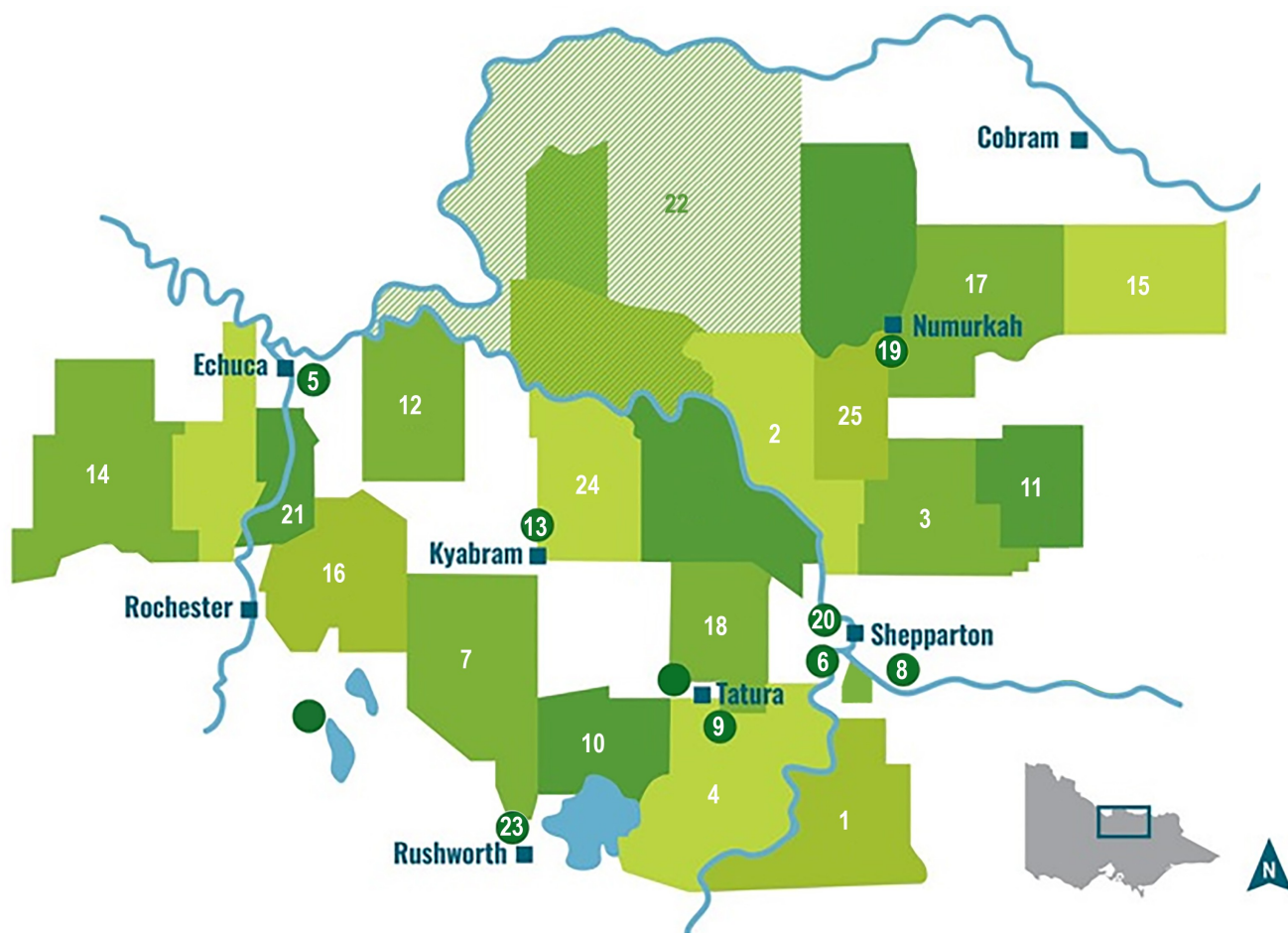


# CONTENTS

<b>GMLN LANDCARE GROUPS.....</b>	<b>3</b>
<b>2023/2024 PARTNERS.....</b>	<b>3</b>
<b>2023/2024 OVERVIEW:</b>	
BACKGROUND AND HISTORY.....	4
GMLN AIMS.....	4
GMLN BOARD AND STAFF FOR 2023/2024 .....	4
GMLN ACHIEVEMENTS IN 2023/2024 .....	5
EXTERNAL MEETINGS .....	5
<b>EXECUTIVE REPORTS:</b>	
PRESIDENT'S REPORT.....	6
TREASURER'S REPORT.....	6
<b>REPORTS:</b>	
FUNDED PROJECTS IN 2023/24.....	7
GMLN 2023/24 SNAPSHOT OF ACHIEVEMENTS .....	8
LIVING THE GOOD LIFE.....	9
FLOODPLAIN ECOLOGY COURSE 2023 .....	10
BEAD (BIODIVERSITY ENVIRONMENT AQUATIC DISCOVERY) .....	11
BEAD ACTIVITY DAYS 2023/2024 .....	12
SOILS AND REGENERATIVE AGRICULTURE REPORT .....	12
BIODIVERSITY REPORT .....	13
LANDCARE GROUP NEWS .....	14
SHEPPARTON MOOROOPNA URBAN LANDCARE GROUP REPORT .....	14
<b>STAFF &amp; MOU</b>	
LIST OF EMPLOYEES .....	16
MEMORANDUM OF UNDERSTANDING .....	16
CONTACTING THE GMLN OFFICE .....	16
<b>AUDITED FINANCIAL REPORT .....</b>	<b>17</b>

# Goulburn Murray Landcare Network

## Landcare Groups



- |  |  |   |
|--|--|---|
| 1. Arcadia & District Landcare Group                       | 9. Goulburn Valley Tree Group            | 18. North West Mooroopna Landcare Group       |
| 2. Bunbartha Kaarimba Landcare Group                       | 10. Harston Community Landcare Group     | 19. Numurkah Urban Landcare Group             |
| 3. Congupna Tallygaroopna Landcare Group                   | 11. Katandra West Landcare Group         | 20. Shepparton Mooroopna Urban Landcare Group |
| 4. Dhurringile & District Landcare Group                   | 12. Koyuga Kanyapella Landcare Group     | 21. Strathallan Family Landcare Group         |
| 5. Echuca Moama Landcare Group                             | 13. Kyabram Urban Landcare Group         | 22. Super Parrot Project                      |
| 6. Friends of the Australian Botanical Gardens, Shepparton | 14. Lockington & District Landcare Group | 23. Waranga Catchment Landcare Group          |
| 7. Girgarre Stanhope Landcare Group                        | 15. Muckatah Landcare Group              | 24. Wyuna Landcare Group                      |
| 8. Goulburn Valley Environment Group                       | 16. Nannella Timmering Landcare Group    | 25. Wunghnu Drumanure Landcare Group          |
|  | 17. Naring Landcare Group                |   |

### 2023/2024 Partners:





## 2023/2024 Overview

### Background and History

Goulburn Murray Landcare is based in Shepparton, Victoria, and operates in the agricultural floodplains of the Goulburn Broken and North Central catchments of Victoria. It covers approximately 3,000 square kilometres and supports 25 Landcare and environmental groups to carry out their projects including sourcing funding, project management and administrative assistance.

The group was formed in 1995 and is managed by community volunteers. Goulburn Murray Landcare works to achieve sustainable land management by working closely with Local and State Government agencies, schools, local Landcare and environment groups.

Goulburn Murray Landcare obtains funding for habitat restoration, school environmental programs, community forums and courses and pest plant and animal activities. We work with community groups, Government agencies and land managers to deliver positive outcomes and to implements projects around the themes of sustainable agriculture, biodiversity and education. GMLN is proudly independent, but enjoys strong working relationships with government agencies and other community organisations.

### GMLN Aims

- ✓ To support Landcare groups in the Agricultural Floodplains
- ✓ To provide opportunities for the exchange of ideas and experiences between Landcare groups
- ✓ To publicise and promote the links between sustainable production and natural resource management
- ✓ To strengthen community business partnerships, by attracting support from and building relationships with, business and industry
- ✓ To strengthen partnerships with government agencies, local government, schools, tertiary institutions, urban communities and other groups as appropriate
- ✓ To influence regional planning and policy decision making
- ✓ To seek funding for Landcare projects
- ✓ To coordinate resources and information sharing
- ✓ To encourage research partnerships with Landcare

### GMLN Executive Board and Staff for 2023/2024

<b>Chairperson</b> .....	John Laing
<b>Vice Chair</b> .....	David Sutton
<b>Secretary</b> .....	Joy Liersch
<b>Treasurer</b> .....	Graham Liersch
<b>Committee members:</b> Nick O'Halloran, Paul Hockett, Bernadette Fitzpatrick, Jock Richardson and Roisin Powles.	
<b>Landcare Facilitator / Office Manager</b> .....	Fiona Stuart
<b>Landcare Facilitator</b> .....	Dan Walker
<b>Biodiversity Officer</b> .....	Carolena Helderman



## GMLN Key Outcomes in 2023/2024

The Victorian Landcare Facilitator Program (VLFP) has extended our funding for 2 part-time Landcare facilitators until June 2025, with further funding hopefully being announced for the program after this.

### **Our key outcomes for the year are listed below:**

- ❖ GMLN employed 3 individuals, and continued overseeing payroll management for the Upper Goulburn Landcare Network.
- ❖ Our office was staffed three days per week when possible, in 2023/2024 by Fiona, Dan and Carolena, with working from home still proving to be a useful option.
- ❖ We participated in 20 school and community activities, including various Clean Up Australia Day sessions, National Tree Day, school tree planting sessions, and various school education days in conjunction with RiverConnect.
- ❖ We held a number of education days and were able to reach approximately 1,108 students. The students appreciate being outside the school environment to learn about our local flora and fauna.
- ❖ We once again successfully coordinated and ran the Floodplain Ecology Course at Morning Glory Resort in Barmah. The October 2023 course was well attended with positive feedback received about the course.
- ❖ We held 10 very successful “Living the Good Life” events. It is always pleasing to see new faces and ideas emerge with this project.
- ❖ We received our third year payments for the Facilitator Funding through the Victorian Landcare Facilitator Program. This funding has now been extended through until March 2026.
- ❖ We made submissions and participated in community consultations such as the Farm and Environment working group, RiverConnect, GBCMA Chairs meetings, VLC meetings and conference and various local council meetings.
- ❖ We entered into a Memorandum of Understanding with Campaspe Shire Council to undertake tree planting in conjunction with the Waranga Catchment Landcare Collective as part of the Queens Jubilee program.

## External Meetings

Staff attended a number of meetings, both online and in person, throughout the year including:

- Coordinators and Facilitators meetings
- Network Chairs meetings
- RiverConnect IAC meetings
- Farm and Environment Working Group
- Shepparton Irrigation Region People and Planning Integration Committee (SIRPPIC)

# Executive Reports

## Presidents Report

A big thank you to everyone who has been involved in GMLN activities and events during the past year. We have been active across our region, organising events around Living the Good Life activities, school education, soil health, planting days and individual group days. We have also participated in activities with RiverConnect and community groups, including Goulburn Valley Tree Group and Transition Tatura.

We have recently completed the 15th Floodplain Ecology Course on the banks of the Murray River. Feedback from both participants and presenters has been positive, with those involved long term saying it was one of the best. A challenge organising presenters, participants, accommodation, food and excursions. Well done Fiona.

We continue to have representation on regional committees, including RiverConnect, Shepparton Irrigation Region People & Planning Integration Committee, the Farm & Environment Working Group, Network Chairs and the Goulburn Broken Wetland Advisory group. These are good structures for information flow both ways and an opportunity to promote Landcare principles. The partnership highlight for the year was the launch of the Shepparton Irrigation Region Land & Water Management Plan, which was the second 30 year plan following the first in 1990.

The grey box woodland project we have been involved in with the Goulburn Broken Catchment Management Authority had been stalled waiting for funding. Whilst reduced, this has now been secured for the next 5 years so Carolena will be out and about working with regional landowners to protect and revegetate threatened grey box communities.

Fiona and Dan have been busy keeping things going. Working with groups on activities, attending partnership meetings, dealing with funding requirements and organising events has led to a busy year and thanks go to both of them for their commitment and dedication.

Whilst some of the groups in the network have been busy organising planting, field days, workshops, presentations and celebrations, general group health is a concern. We need to work on volunteer recruitment and participation to support group resilience.

The ongoing loss of farm vegetation is depressing. Landcare groups and farmers committed lots of time, energy and resources establishing shelter belts and salinity management plantings and protecting remnant paddock trees, and to see the continuing losses is a bit of a kick to the people involved over many years.

One of the other things that has continued to decline is funding. The resource managers Goulburn Murray Landcare work with, mainly the Goulburn Broken Catchment Management Authority and Parks Vic, have both endured funding reductions over the past few years and this is having an impact on their ability to carry out vital works. It is disappointing that whilst giving the impression that they have things under control, state and federal governments are reducing funding and the state of our natural environment continues to decline. The frustration, anxiety and concern for the future is evident across all the resource management meetings we are involved in.

Goulburn Murray Landcare Network was officially established in 1995. Next year marks 30 years of coordinated Landcare activities in the Goulburn Murray region and we are encouraging everyone that has been involved to come along and celebrate the great things Landcare volunteers have achieved in this time.

Thanks to the executive committee for their ongoing involvement and commitment. Meetings are always interesting with robust discussion of issues. Thanks to the network staff that make things happen and a big thanks to the people that come along to participate.

*John Laing*  
Network Chairperson

## Treasurer's Report

It's interesting to look back over past Annual Financial reports and note the turnover in dollars has reduced quite a bit. However, our network is administering for fewer outside people, as they finish their projects.

Fiona is still processing eight pays in total, being three Goulburn Murray Landcare Network and five Upper Goulburn Landcare Network staff.

Fiona, Dan and Carolena are still flat out with their work and at present, we have the funds to support them. But, as always with the Government, funding can be reduced at any time.

With Fiona's careful management our Networks finances are sound, allowing us to run all our programs.

Thanks to John's leadership and Fiona, Dan and Caroleena's diligent work, GMLN had another successful Year.

Graham Liersch  
Network Treasurer

## Reports

### Funded Projects in 2023/24

Funding Source	Amount <small>ex GST</small>	Grants included
DEECA – Victorian Landcare Grant	\$15,750	Living the Good Life (LTGL)
Australian Government Natural Heritage Trust Funding	\$100,000 over 5 years	Landscape Legacies - Restoring Grey Box Grassy Woodlands
Australian Government National Landcare Programme	\$10,00	Floodplain Ecology Course – October 2023
Australian Government Department of Social Services	\$4,000	2023–24 Volunteer Grants

We were once again successful in securing funding from the GBCMA and the State Government Victorian Landcare Grants to continue our highly successful **“Living the Good Life”** project which is aimed at getting small landholders interested in landcare activities and providing them with information to better manage their land. This is always well supported by the community and is a great project which we hope will continue on next year.

Whilst we did not receive funding for our education **Biodiversity Environment Aquatic Discovery (BEAD)** program in 2023, we were still able to support our local schools and community groups through the provision of various environmental education sessions (see BEAD report).

We were provided funding from the GBCMA to help deliver the **Landscape Legacies - Restoring Grey Box Grassy Woodlands** project which will deliver actions to improve the condition of the threatened Grey Box Grassy Woodlands and derived native grasslands. This work was undertaken by our Biodiversity Officer, Carolena.

We again received some funding from the GBCMA for the **Floodplain Ecology Course** which is always popular and booked out well in advance.

There are more detailed reports for the projects mentioned above further on in the report.

Thank-you to all the Landcare volunteers who have supported GMLN projects.

Without you we would not be able to continue delivering these projects.



## Queens Jubilee Grant

GMLN worked with Lockington Landcare and Waranga Catchment Landcare Collectives to implement two planting projects in Winter 2022 and 2023 through funding received for this project through the Dept of Industry, Science, Energy & Resources. This project aimed to plant trees, install a commemorative plaque and hold an event in honour of The Queen's Jubilee, as well as increase biodiversity and provide habitat for native fauna. The planting events attracted 70 students who assisted with the works and Traditional owners to Welcome us to Country.

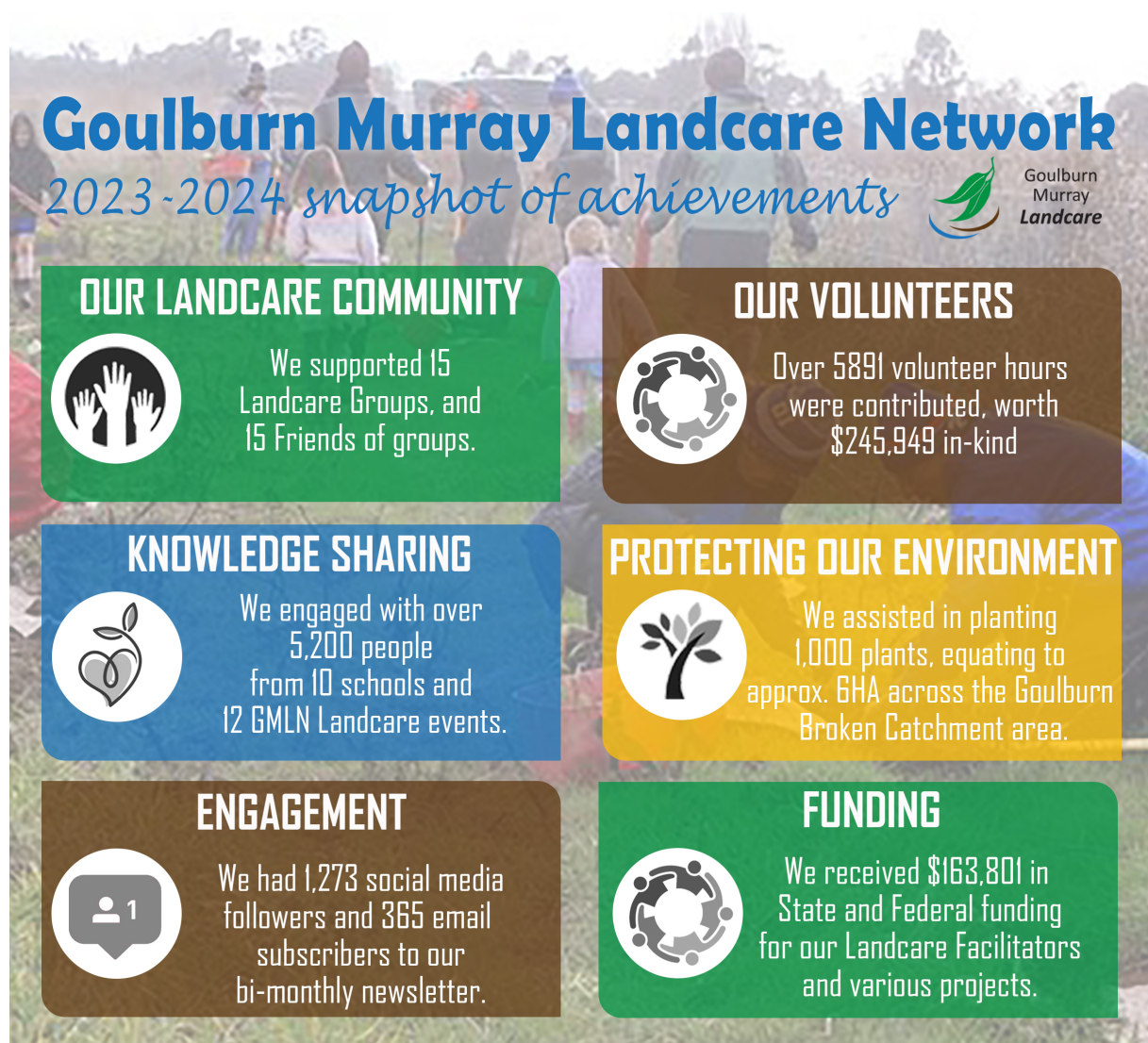


## 2023-24 Volunteer Grants

The Australian Government recognises the vital contribution of volunteers in strengthening and enriching our communities. This Grant will help your organisation support your volunteers to carry out their important work. GMLN were successful in receiving \$4,000 on planting equipment that will benefit our volunteer networks. Planting trowels, pottipuki's, planting shovels and a Makita battery auger were purchased.

## Fifteen Trees (FT) Donation of Native seedlings

Each year GJ Gardner Homes donate funds to Fifteen Trees's, and in 2024 GMLN was successful in receiving 360 native plants from the program that have been used to compliment our BEAD events which involved events with schools, Landcare groups and the community.





The **Living the Good Life** project provides access to practical information to local landholders across the agricultural floodplains and brings together new and existing small landholders to gain valuable skills and knowledge and enable them access to resources that will encourage them to make their properties more sustainable and productive.

**Living the Good Life** workshops and presentations for 2024 consisted of:

- **Biodiversity in the Backyard at GV Tree Nursery in Tatura.** This is the second time we have held the event and its proving very popular with over 200 people coming through the nursery to hear from Landscape designer Lou Coster, Mini beasts with John and wildlife with BoHollow Wildlife Enviro Ed. The nursery volunteers assist the public to select suitable plants for their gardens and property.
- **Trees for Mum in Shepparton and Echuca for the Mothers Day Classic.** Over 300 native plants were distributed to the public during the events while promoting our Landcare Network and groups.
- **Numurkah Community nest box workshop.** Over 35 people attended this Sunday morning workshop in Numurkah, constructing 30 squirrel glider box kits. We also discussed the many styles of nest boxes as well as what fauna would call these home.
- **R U OK community planting day.** This event was held at the Shepparton Botanical gardens. Supported by CoGS, HeadSpace and the Kiwains made for a great morning out for the 20 attendees promoting mental health and nature.
- **Cultural & Geological Perspectives of our Rivers.** A well attended event at the port of Echuca wharf over looking the beautiful Dungala river.
- **Yambuna Wildflower and Insect Discovery Walk.** We meandered with the Nathalia Wildflower group through the reserve marvelling at the natural wonders.
- **Arcadia Fish Hatchery Guided Tour & GMLN AGM.** An informative tour of the hatchery was enjoyed followed by our AGM and lunch.

This project also funds our annual **Farm Forum** series, with topics for this years series including:

- **Weeds and What They Tell Us** with Gwyn Jones. This event attracted 26 participants to Naring CFA Hall to delve into weeds and what they tell us about our soil and environment. An event that challenged our current views on weeds and their management.
- **Building Soils in Irrigation Areas** with David Hardwick from Soil Land Food. 25 participants attended at the Lancaster Recreation Reserve where David discussed everything from soil biology, chemistry and management practices to assist with building better soils on irrigation.
- **Soil Health and Moisture Probes** with Ag Vic. Farmers attend this event on farm in Nanneella. A soil pit was discussed and analysis as well as how to best interpret the Ag Vic soil moisture probe network.

Our events reach a wide audience within our communities. Providing opportunities for the community to connect and increase knowledge is crucial to our Network. These planned events allow us to promote our network and Landcare in general to the wider public. Over 450 individuals were engaged throughout the delivery of LTGL events, and we look forward to delivering LTGL in 2025.

## Floodplain Ecology Course 2023



This year we celebrated the 14<sup>th</sup> year of The Floodplain Ecology Course which was held in October 2023. We have been blessed with a wonderful course that consistently draws amazing presenters with great depths of knowledge and the ability to impart their information with passion and good humour.

We are grateful for the continued input and support from Keith Ward (GBCMA), Neville Rosengren (Geomorphologist), Ian Rutherford (Geographer and fluvial geomorphologist) and Damien Cook (ecologist) and the many other presenters who were so generous with their time and knowledge.

Accolades to our presenters for their generosity with both time and knowledge. We cannot run the course without them. Instructors & presenters for the October 2023 course included Keith Ward (GBCMA), Neville Rosengren (LaTrobe University), Ian Rutherford (University of Melbourne), Darren Baldwin (Rivers & Wetlands), Daryl Neilsen (CSIRO), Damien Cook (Wetland Revival Trust), Lindy Lumsden (DEWLP Arthur Rylah Institute), Greta Morgan, Hilda Stewart & Ralph Hume (Parks Vic), Sue Logie (Superb Parrot Project), Zeb Tonkin (Arthur Rylah Institute), Keith Chalmers (VEWH), Nick O'Halloran (Ag Vic), John Laing (GMLN Bug extraordinaire), Graham Stockfeld (Turtles Australia), Michael Shackleton (Latrobe University). Thanks to everyone for their continued assistance.

The attendees come from such varied backgrounds and areas of expertise. All come with the hope they will gain insights into floodplain operations and management. Everyone has such great expectations when they arrive because most of our participants have booked into the course on recommendations from past attendees.

Morning Glory Resort is a fantastic venue and engages them from the beginning. The staff are so helpful and answer every request we have quickly and efficiently. We cannot thank them enough.

Next, we have the food!!! Doug and Kaye from Murphs Roving Roast cater for all meals during the week. Highlights are always the Bush Banquet and of course "curry night". Doug makes us all feel special with his amazing meals and generous servings. We all go home happy and perhaps with a larger size belt.

This year we received funding for the course through the Goulburn Broken Catchment Management Authority which will allow us to continue providing this course for the next four years and we thank them for their continued support.

Thankyou to all the presenters and attendees for another fantastic course. It is an exhausting but rewarding course that continues to draw fantastic numbers. And thankyou for trusting me to deliver this fantastic project.

*Fiona Stuart*  
Project Coordinator





Whilst we were not successful in obtaining funding for our education program through the Victorian Landcare Grants in 2023-2024, we continued to engage as many students and community members as possible in spending time in their local environment and appreciating their surrounds. This program is always a valuable part of environmental learning for our schools and local community, and this year we reached over 1,100 people who participated in at least one of our learning activities.

These are some of the events we were able to attend throughout 2023 and 2024:

- **NatureScripts** – Nature Scripts, as part of headspace, offers a nature-centric social prescription program for young people aged 18 to 25, fostering wellness and connection with the outdoors. We have provided several programs for the NatureScripts this year including macroinvertebrates and tree planting.
- **World Rivers Day** – we joined forces with RiverConnect for their annual River Run Race at the Victoria Park Lake in Shepparton, with around 300 people in attendance.
- **Clean Up Australia Day** – Dan assisted the Echuca/Moama Landcare Group in running two cleanup sessions at the Banyule Forest (Chinamans Sandbar) and also at Victoria Park Boat Ramp Echuca.
- We ran **Tree Planting days** with various schools, with 140 trees being planted.
- **Various education activity days** – a number of education activities were held with local primary schools or the general community including Merrigum Primary School, Guthrie Street Primary School, Family Haven Mooroopna, St Anne's Secondary College, Harston Primary School, Lockington Shine Bright Kindergarten, Bat Night at Cussen Park Tatura, Colbinabbin Kindergarten & Primary School, Sacred Heart Primary School, Community Kids Early Learning Centre and two wonderful bush kinder sessions with Tongala Kindergarten.

Regardless of the event we are attending, you can always be guaranteed that John and his collection of Mini Beasts will always be the centre of attention.

We are forever grateful for his dedication and passion to teach children (and adults too) about the various types of terrestrial invertebrates in our environment.



*Special thanks to all our support teams that we work with regularly, from RiverConnect; Parks Vic; COGS; Moira Shire; GV Water; GBCMA; Landcare groups and individuals. Your enthusiasm and assistance is invaluable in enabling us to deliver this project.*



## BEAD Activity Days in 2023/2024

Date	Name	Location	Description	Attendance
4.8.2023	Merrigum PS, grade 3/4	Merrigum PS	Mini beasts & water bugs	13
12.9.2023	Guthrie Street PS, grade 3/4	Shepparton Botanic Gardens	Mini beasts, Biodiversity Twister, Tracks n Scats	125
14.9.2023				
24.9.2023	World Rivers Day	Shepparton Park Lake	Mini beasts, badges, colouring in	300
28.9.2023	Family Haven school holiday program	Family Haven, Mooroopna	Mini beasts & craft	30
24.10.2023	Tongala Bush Kinder	Barmah	Macroinvertebrates	40
25.10.2023	Tongala Bush Kinder	Tongala Kindergarten	Macroinvertebrates	20
9.11.2023	St Anne's Secondary College	Shepparton Botanic Gardens	Mini beasts, tracks n scats, biodiversity twister	60
22.11.2023	Harston PS, grade Prep-6	Harston PS	Mini beasts	10
11.12.2023	Lockington Shine Bright Kinder	Lockington Kindergarten	Various activities	13
5.2.2024	NatureScripts	On the banks of the Goulburn River, Shepparton	Macroinvertebrates	6
3.3.2024	Clean Up Australia day	Banyule Forest and Victoria Park Boat Ramp Echuca	Rubbish collection	37
26.3.2024	NatureScripts	On the banks of the Goulburn River, Shepparton	Macroinvertebrates	9
6.4.2024	Bat Night	Cussen Park, Tatura	Mini beasts	180
15.5.2024	Bacchus Marsh Grammar	Kanyapella Night Soil site	Tree planting	70
23.5.2024	Colbinabbin Kindergarten & Primary School	Colbinabbin Bush Kinder site	Mini beasts, Biodiversity Twister, Turtle talk, Tracks & Scats, Nature Walk	80
13.6.2024	Sacred Heart PS, grade 3/4	Sacred Heart PS	Mini beasts & Native Australian Animal craft	40
17.6.2024	NatureScripts Celebration	Reedy Swamp	Damper making and spotlight walk	30
24.6.2024	Community Kids Shepparton	Community Kids Shepparton	Mini beasts	35
26.6.2024	NatureScripts	Tassicker Reserve	Tree planting	10
				<b>1108</b>



## Biodiversity Report 2023/2024

The 5 year **Linking Landscapes** funding came to an end in June 2023. Between 2018 and 2023, the Goulburn-Broken Catchment Management Authority coordinated the **Linking Landscapes** project to protect Grey Box Woodlands, through the Australian Government's Regional Land Partnership Program.

- 1385 people attended community events/field days/workshops.
- 540 hectares were revegetated at strategic locations.
- 4,448 hectares of weed control and 2,876 hectares of pest animal control was undertaken on public and private land.
- Over 16 kilometres of exclusion fencing.
- The project encouraged 249 land managers to protect the 'paddock trees of the future' by installing 800 purpose-built paddock tree guards and highlighted the importance of fallen timber and the organic ground layer in the Grey Box Grassy Woodland ecosystem.

In the final 6 months of **the Linking Landscapes** project, I visited properties with agreements to finalise reports such as weeds, plant survival, preparation, transect reporting and direct seeding.

Several sites involving direct seeding 3 sites, spraying and some small niche seeding sites works were extended to September 2023. Unfortunately, during the floods, three properties lost all tube stock planted over the past three years with another two losing a smaller amount. The landholders haven't lost the drive and are keen to plant again. GBCMA funded new plants which I ordered and supplied to the landholders ..... and in they go again.

I followed this with site reporting work for Rebecca Caldwell at GBCMA for a small contract and then did not resume work until February.

With no federal Biodiversity funding work until May 2024, GBCMA was working on the application to be considered to tender for the 2024 funding which will be under the theme of threatened species.

The Australian Government funded **Landscape Legacies Project- Restoring Grey Box Grassy Woodland** funding was approved in May 2025 and our agreement was drawn up. GMLN received funding from GBCMA for works (over 5 years) for 34 hectares revegetation/ protection. Landholders are sought via a *Expression of Interest* form at GBCMA. I began site visits to do assessments in June to present at the September meeting.

The first meeting for the **Landscape Legacies Project**, Biodiversity Officers and Landcare Facilitators was at the end of May and I began site visits mid-June. Three site visits were completed in this financial year and presented to the funding meeting in September 2024. Two were approved and one requires more information.

To end on a positive note, although in the next financial year, two of these were approved at the September meeting which means that two agreements are in motion.

The financial year ended with the first Landscape Legacies Project event with presentations by Steve Sinclair ARI (grassy woodland veg), Chris Tzaros (Birds) and Karen Retra (invertebrates). The event was well attended. We are to run one event during the five year funding.

Carolena Helderman  
Project Coordinator



## Landcare Group News

Throughout 2023-2024 we continued to reach out to our Landcare Groups as much as possible. Many of our Landcare Groups have been busy hosting a variety of working bees, tree planting days, rubbish collection days, weeding sessions, and many other Landcare events.

A special congratulations to both the **Congupna Tallygaroopna Landcare Group** and also the **Kyabram Urban Landcare Group** who both celebrated 25 years of Landcare, with many of the founding members of both groups still actively involved today. Well done to both groups for continuing to dedicate their time to looking after our environment.

We look forward to continuing to support our groups throughout 2023-2024.



## Shepparton Mooroopna Urban Landcare Group

Shepparton Mooroopna Urban Landcare Group Committee: President Wendy Damore, Secretary Helen Jeffs, Minute Secretary Debbie Harvey, Treasurer Gerry Goonan, Land Managers Rep Phil Croke, Media Paul Hockett, Committee member Sharon Way. GMLN Rep Paul Hockett, ABGS Advisory Committee Wendy D'Amore, Environment Groups meeting: Wendy D'Amore.

This year SMULG have had a very busy time with working on two grants: Taking Refugees into the Bush and Wasteland to Wetland project, while continuing our Weeding Wednesday activities and other programs that we support.

### **Taking Refugees into the Bush, Grant through Parks Vic. \$3000.**

We've accomplished our 'Taking Refugees into the bush' Grant. Initial connections with Refugee groups and their mentors was a learning process. Gerry Goonan, the project leader, was very relieved as the continual floods that prevented activities in the Bushland were very challenging, however when the events did take place, they were very successful.

All events were on Parks Vic land and included – over 175 attendees to: Bird ID with SELC (Shepparton English Learning Centre) school group at Reedy Swamp; Planting Day at Reedy Swamp with Parks Vic; One tree per Child with SELC and St Georges Rd Community Hub; Spotlight walk enjoying Billy tea and Damper, with Picnic for Peace group at Reedy Swamp; and Fishing, supported by Parks Vic with SELC school group at Goulburn River Shepparton.

We have built a positive connection with the People that Mentor, to assist and teach Refugees, and the Refugees themselves. We are confident that we made a significant difference to their lives through connection with nature. We expect to be asked to take more Refugees into the bush in the future.

As part of this grant, Helen Jeffs was able to design and purchase a banner to display at our events. Also a first aid kit and snake bandages were purchased and some remaining funds to go towards a First Aid Course for some members. We were very grateful for support from the Parks Vic staff in applying for the grant, field activities and the acquittal.

### **Wasteland to Wetland Grant, Victorian Landcare, \$18000**

Wendy D'Amore secured a Grant, to turn the clay pits at the Australian Botanical Gardens Shepparton (ABGS), into a Wetland. The aim was to increase health, habitat and biodiversity of the wetland and reduce erosion. A contractor was sought to provide plants, plant and train SMULG and Friends of the Australian Botanic Gardens Shepparton (FoABGS) members how to plant in wetlands. It was a very successful event. Many thanks to Fiona for helping with the budget. This grant will be acquitted in November 2024.

**Weeding Wednesday group** led by Phil Croke, has also had a varied year with weather and land closures. However, when the group got into it, a large number of weeds were removed primarily from Reedy Swamp and Australian Botanic Gardens Shepparton bushland area.

SMULG assisted with **National Tree Day** at Sevens Estate and provided an awesome workforce in partnership with council staff in laying out plants, stakes and guards ready for the general public.

**Clean up Australia Day** event at the Fish ladder/ Weir. Supported by RiverConnect and Parks Vic. Some members assisted with other clean up events.

The Annual SMULG, **Bush Boulevard Spring Walk**, supported by RiverConnect, and advertised as an Activity in the Park event, had plenty of members attend, but only one member of the public, however that person became a SMULG member. RiverConnect and SMULG discussed changes for the following Spring Walk (which was much more successful).

SMULG members also attended: the International recognition of wetlands, RAMSAR, event at the Winton Wetlands, Flood Recovery event with Sophie Thomson, Gardening Australia, GBCMA Volunteer Christmas event at the Euroa Arboretum.

We have targeted some of our gatherings to be more interesting (to replace some of our meetings). Helen and Steve Jeffs hosted our AGM together with a Retro fitting, Permaculture, Solar / battery, evening at their home. This year we had guest Speaker Damien Dollar who spoke on camera trapping. Both events were very enjoyable and well attended.

SMULG partnered with RiverConnect at **the Australian Botanical Gardens Open day**. A poster was displayed about the Wasteland to Wetland project and the 'water bug play' activity was very popular with visiting children.

Our members are proactive in letter writing to agencies. eg to council regarding Boulevard Bush Reserve car park, and the completing the final stage of the path. Both infrastructure works have been completed. Our group has concerns regarding contractors and the community dumping construction and garden and household waste at Reedy Swamp.

Our strength as a group is our valued partnerships. Thank you to GMLN staff in supporting us with our grants, activities and administration. We support and are supported by RiverConnect, Friends of ABGS, BirdLife Murray Goulburn, and the land managers of GSCC and Parks Vic. It allows us to participate in many wonderful activities and also be supported in the events that we run.

Wendy Damore  
SMULG President

## Staff & MOU

### List of Employees

GMLN staff for 2023/2024 included:



**Fiona Stuart** – Landcare Facilitator

Fiona worked three days a week coordinating BEAD and Living the Good Life projects for 2023/2024, along with coordinating the annual Floodplain Ecology Course, whilst also maintaining the administrative duties for the office.



**Dan Walker** – Landcare Facilitator

Dan worked three days a week throughout 2023/2024, focusing on making strong connections with our Landcare groups, and on our Living the Good Life and Farm Forum events.



**Carolena Helderman** – Biodiversity Officer

Carolena works one day a week and oversees the Landcape Legacies project.

### Memorandum of Understanding

We also have a Memorandum of Understanding with the following Networks to provide payroll services:

- ❖ Upper Goulburn Network

### Contacting the GMLN Office

**Office Location:** 82 Wyndham Street, Shepparton 3630  
**Telephone:** (03) 5821 3530  
**Email:** [info@gmln.com.au](mailto:info@gmln.com.au)  
**Website:** [www.gmln.com.au](http://www.gmln.com.au)



## Not-For-Profit - Association Report

Goulburn Murray Landcare Network Incorporated  
For the year ended 30 June 2024

Prepared by Skybridge Financial - Group

## Contents

3	Committee's Report
4	Income Statement
5	Income and Expenditure Statement
7	Statement of Comprehensive Income
8	Statement of Financial Position
9	Statement of Changes in Equity
10	Statement of Cash Flows
11	Notes to the Financial Statements
14	Statement By Members of the Committee
15	Certificate by Member of the Committee

## Committee's Report

### Goulburn Murray Landcare Network Incorporated For the year ended 30 June 2024

#### Committee's Report

Your committee members submit the financial report of Goulburn Murray Landcare Network Incorporated for the financial year ended 30 June 2024.

#### Committee Members

The names of committee members in office at anytime during or since the end of the year are:

John Laing

David Sutton

Graham Liersch

Joy Liersch

Bernadette Fitzpatrick

Nick O'Halloran

Paul Hockett

Jock Richardson

#### Significant Changes

No significant changes in the nature of these activities occurred during the financial year.

Signed in accordance with a resolution of the Members of the Committee on:

---

**John Laing**

---

**Graham Liersch**

**Dated:**

## Income Statement

### Goulburn Murray Landcare Network Incorporated For the year ended 30 June 2024

	2024	2023
<b>Income</b>		
Revenue	200,963	259,773
Donations	399	-
<b>Total Income</b>	<b>201,363</b>	<b>259,773</b>
<b>Gross Profit</b>	<b>201,363</b>	<b>259,773</b>
<b>Expenditure</b>		
Employee Benefits Expense	116,931	122,095
Other Expenses	133,879	148,308
Charity Donations	500	-
<b>Total Expenditure</b>	<b>251,310</b>	<b>270,403</b>
<b>Profit Before Income Tax</b>	<b>(49,948)</b>	<b>(10,630)</b>
<b>Profit for the Year</b>	<b>(49,948)</b>	<b>(10,630)</b>
<b>Profit Attributable to Members of the Entity</b>	<b>(49,948)</b>	<b>(10,630)</b>

The accompanying notes form part of these financial statements. These statements should be read in conjunction with the attached compilation report.



## Income and Expenditure Statement

### Goulburn Murray Landcare Network Incorporated For the year ended 30 June 2024

	2024	2023
<b>Income</b>		
Donations	125,879	190,295
Fundraising	66,983	59,478
<b>Total Income</b>	<b>192,863</b>	<b>249,773</b>
<b>Gross Surplus</b>	<b>192,863</b>	<b>249,773</b>
<b>Other Income</b>		
Management fees	8,500	10,000
<b>Total Other Income</b>	<b>8,500</b>	<b>10,000</b>
<b>Expenditure</b>		
Depreciation	9,904	7,115
Motor Vehicles	2,490	5,084
Travel and Accommodation	9,346	10,432
Accommodation	16,261	12,827
Advertising	4,467	708
Auditor fee	4,000	4,000
Bank Fees	322	342
Catering	21,114	24,167
Charity Donations	500	-
Cleaning	5	443
Consulting & Accounting	15,517	18,620
Contractors	3,802	11,259
Employee Entitlements - Holiday Pay	(1,691)	3,862
Employee Entitlements - Long Service Leave	1,863	1,586
Entertainment	-	500
General Expenses	2,297	9,505
Hire of Equipment	436	330
Insurance	4,927	990
Light, Power, Heating	408	428
Office Expenses	1,093	503
Petty Cash	(36)	-
Postage, freight & courier	13	98
Printing & Stationery	216	1,188
Project Supplies	9,545	12,768
Rent	21,418	21,457
Repairs and Maintenance	654	-
Subscriptions	2,474	904
Superannuation	11,183	10,719
Telephone	2,789	3,740
Training	417	900

The accompanying notes form part of these financial statements. These statements should be read in conjunction with the attached compilation report.

	2024	2023
Wages and Salaries	105,576	105,928
<b>Total Expenditure</b>	<b>251,310</b>	<b>270,403</b>
<b>Current Year Surplus/ (Deficit) Before Income Tax Adjustments</b>	<b>(49,948)</b>	<b>(10,630)</b>
<b>Current Year Surplus/(Deficit) Before Income Tax</b>	<b>(49,948)</b>	<b>(10,630)</b>
<b>Net Current Year Surplus After Income Tax</b>	<b>(49,948)</b>	<b>(10,630)</b>

The accompanying notes form part of these financial statements. These statements should be read in conjunction with the attached compilation report.

## Statement of Comprehensive Income

### Goulburn Murray Landcare Network Incorporated For the year ended 30 June 2024

	2024	2023
<b>Income</b>		
Revenue	200,963	259,773
Membership	399	-
<b>Total Income</b>	<b>201,363</b>	<b>259,773</b>
<b>Expenses</b>		
Expenses	250,810	270,403
<b>Total Expenses</b>	<b>250,810</b>	<b>270,403</b>
<b>Profit for the Year</b>	<b>(49,448)</b>	<b>(10,630)</b>
<b>Expenditure</b>		
Charity Donations	500	-
<b>Total Expenditure</b>	<b>500</b>	<b>-</b>
<b>Total Comprehensive Income for the the Year</b>	<b>(49,948)</b>	<b>(10,630)</b>
<b>Total Comprehensive Income for the the Year</b>	<b>(49,948)</b>	<b>(10,630)</b>
<b>Total Comprehensive Income Attributable to Members of the Entity</b>	<b>(49,948)</b>	<b>(10,630)</b>

The accompanying notes form part of these financial statements. These statements should be read in conjunction with the attached compilation report.

## Statement of Financial Position

### Goulburn Murray Landcare Network Incorporated As at 30 June 2024

	NOTES	30 JUNE 2024	30 JUNE 2023
<b>Assets</b>			
<b>Current Assets</b>			
Cash on Hand	2	451,216	508,128
Accounts Receivable and Other Debtors	3	4,917	2,365
Motor Vehicle		37,636	37,636
Less Accumulated Depreciation on Motor Vehicle		(13,219)	(7,115)
<b>Total Current Assets</b>		<b>480,551</b>	<b>541,014</b>
<b>Total Assets</b>		<b>480,551</b>	<b>541,014</b>
<b>Liabilities</b>			
<b>Current Liabilities</b>			
Accounts Payable and Other Payables	5	10,997	21,960
Borrowings	6	3,066	2,695
Provisions	7	17,714	17,541
Tax Withheld		(97)	-
<b>Total Current Liabilities</b>		<b>31,680</b>	<b>42,196</b>
<b>Total Liabilities</b>		<b>31,680</b>	<b>42,196</b>
<b>Net Assets</b>		<b>448,871</b>	<b>498,819</b>
<b>Equity</b>			
Retained Earnings		448,871	498,819
<b>Total Equity</b>		<b>448,871</b>	<b>498,819</b>



## Statement of Changes in Equity

Goulburn Murray Landcare Network Incorporated  
For the year ended 30 June 2024

	2024	2023
<b>Equity</b>		
Opening Balance	498,819	509,449
<b>Increases</b>		
Profit for the Year	(49,948)	(10,630)
<b>Total Increases</b>	<b>(49,948)</b>	<b>(10,630)</b>
<b>Total Equity</b>	<b>448,871</b>	<b>498,819</b>

## Statement of Cash Flows

### Goulburn Murray Landcare Network Incorporated For the year ended 30 June 2024

	2024	2023
<b>Operating Activities</b>		
Receipts From Customers	71,129	71,861
Payments to Suppliers and Employees	(116,758)	(116,647)
Finance Costs	(322)	(342)
Cash Receipts From Other Operating Activities	140,813	242,530
Cash Payments From Other Operating Activities	(134,162)	(161,599)
<b>Net Cash Flows from Operating Activities</b>	<b>(39,301)</b>	<b>35,803</b>
<b>Investing Activities</b>		
Payment for Property, Plant and Equipment	(3,800)	-
Other Cash Items From Investing Activities	(100,111)	(37,636)
<b>Net Cash Flows from Investing Activities</b>	<b>(103,911)</b>	<b>(37,636)</b>
<b>Financing Activities</b>		
Proceeds from Borrowing	371	2,218
<b>Net Cash Flows from Financing Activities</b>	<b>371</b>	<b>2,218</b>
<b>Other Activities</b>		
Other Activities	(14,182)	(2,482)
<b>Net Cash Flows from Other Activities</b>	<b>(14,182)</b>	<b>(2,482)</b>
<b>Net Cash Flows</b>	<b>(157,022)</b>	<b>(2,097)</b>
<b>Cash and Cash Equivalents</b>		
Cash and Cash Equivalents at Beginning of Financial Year	508,128	510,225
Cash and Cash Equivalents at Beginning of Financial Year	(157,022)	(2,097)
Cash and Cash Equivalents at End of Financial Year	351,106	508,128
<b>Net change in cash for period</b>	<b>(157,022)</b>	<b>(2,097)</b>

## Notes to the Financial Statements

### Goulburn Murray Landcare Network Incorporated For the year ended 30 June 2024

#### 1. Summary of Significant Accounting Policies

##### Financial Reporting Framework

The financial statements are special purpose financial statements prepared in order to satisfy the financial reporting requirements of the Associations Incorporation Reform Act 2012 Victoria. The committee has determined that the association is not a reporting entity.

##### Basis of Preparation

The financial statements have been prepared on an accruals basis and is based on historic costs and does not take into account changing money values or, except where specifically stated, current valuations of non-current assets.

The following significant accounting policies, which are consistent with the previous period unless otherwise stated, have been adopted in the preparation of these financial statements.

##### (a) Income Tax

The entity is exempt from income tax expense.

Current income tax expense charged to profit or loss is the tax payable on taxable income for the current period. Current tax liabilities (assets) are measured at the amounts expected to be paid to (recovered from) the relevant taxation authority using tax rates (and tax laws) that have been enacted or substantively enacted by the end of the reporting period.

Current and deferred income tax expense (income) is charged or credited outside profit or loss when the tax relates to items that are recognised outside profit or loss or arising from a business combination.

A deferred tax liability shall be recognised for all taxable temporary differences, except to the extent that the deferred tax liability arises from:

- (a) the initial recognition of goodwill; or
- (b) the initial recognition of an asset or liability in a transaction which:
  - (i) is not a business combination; and
  - (ii) at the time of the transaction, affects neither accounting profit nor taxable profit (tax loss).

##### (b) Employee Benefits

Provision is made for the association's liability for employee benefits arising from services rendered by employees to the end of the reporting period. Employee benefits have been measured at the nominal amounts expected to be paid when the liability is settled, plus any related on-costs. Both annual leave and long service leave are recognised within the provisions liability. This is the first year of recognising employee benefits in the Financial Reports.

##### (c) Goods and Service Tax (GST)

Revenues, expenses and assets are recognised net of the amount of GST, except where the amount of GST incurred is not recoverable from the Tax Office. In these circumstances the GST is recognised as part of the cost of acquisition of the asset or as part of an item of the expense. Receivables and payables in the statement of financial position are shown inclusive of GST.

	2024	2023
<b>2. Cash on Hand</b>		
GMCU Community Account	100,111	-
Bendigo Bank Term Deposit #039	54,204	53,268
BB Term Deposit #673 CLOSED	-	52,324
Bendigo Bank Term Deposit #795	106,181	102,142
Bendigo Bank Cheque #5845	57,423	186,119
Bendigo Bank - Leave Account #5794	12,048	11,636
Bendigo Bank - Wages Account #5993	121,148	98,605
Gecko Clan - Holding Account	(357)	38
UGLN - Holding Account	159	3,696

These notes should be read in conjunction with the attached compilation report.

Waranga CLG - Holding Account	300	300
<b>Total Cash on Hand</b>	<b>451,216</b>	<b>508,128</b>

2024 2023

### 3. Accounts Receivables and Other Debtors

<b>Current</b>		
Accounts Receivable	4,917	2,365
<b>Total Current</b>	<b>4,917</b>	<b>2,365</b>
<b>Total Accounts Receivables and Other Debtors</b>	<b>4,917</b>	<b>2,365</b>

2024 2023

### 4. Property, Plant and Equipment

General Small Business Pool	7,189	3,389
Accumulated Depreciation on General Small Business Pool	(7,189)	(3,389)
<b>Total Property, Plant and Equipment</b>	<b>-</b>	<b>-</b>

2024 2023

### 5. Accounts Payable and Other Payables

<b>Current</b>		
Accounts Payable	2,869	957
GST	(2,713)	10,580
PAYG Withholdings Payable	7,846	7,630
Rounding	-	-
Superannuation Payable	2,995	2,794
<b>Total Current</b>	<b>10,997</b>	<b>21,960</b>
<b>Total Accounts Payable and Other Payables</b>	<b>10,997</b>	<b>21,960</b>

2024 2023

### 6. Borrowings

<b>Current</b>		
Bendigo Bank Credit Card #7137	731	360
SMULG - Holding Account	2,335	2,335
<b>Total Current</b>	<b>3,066</b>	<b>2,695</b>
<b>Total Borrowings</b>	<b>3,066</b>	<b>2,695</b>

2024 2023

### 7. Provisions

<b>Current</b>		
Provision for Holiday Pay	11,027	12,718

These notes should be read in conjunction with the attached compilation report.



	2024	2023
Provision for LSL	6,686	4,823
<b>Total Current</b>	<b>17,714</b>	<b>17,541</b>
<b>Total Provisions</b>	<b>17,714</b>	<b>17,541</b>

These notes should be read in conjunction with the attached compilation report.

## Statement By Members of the Committee

### Goulburn Murray Landcare Network Incorporated For the year ended 30 June 2024

The committee has determined that the association is not a reporting entity and that this special purpose financial report should be prepared in accordance with the accounting policies outlined in Note 1 to the financial statements.

In accordance with a resolution of the committee of Goulburn Murray Landcare Network Inc, the members of the committee declare that the financial statements for the year then ended, a summary of significant accounting policies and other explanatory notes:

1. present a true and fair view of the financial position of Goulburn Murray Landcare Network Inc as at 30 June 2024 and its performance for the year ended on that date in accordance with the accounting policies described in Note 1 to the financial statements and the requirements of the Associations Incorporation Reform Act 2012; and
2. at the date of this statement there are reasonable grounds to believe that Goulburn Murray Landcare Network Inc will be able to pay its debts as and when they fall due.

This statement is signed for and on behalf of the committee by:

**President** \_\_\_\_\_  
**John Laing**

**Treasurer** \_\_\_\_\_  
**Graham Liersch**

**Dated:**

## Certificate by Member of the Committee

**Goulburn Murray Landcare Network Incorporated**  
**For the year ended 30 June 2024**

I, John Laing of and I, Gregory John Laing of, certify that:

1. I attended the annual general meeting of the association held on .....
2. The financial statements for the year ended 30 June 2024 were submitted to the members of the association at its annual general meeting.

**Dated:**