

2022 – 2023

ANNUAL

REPORT



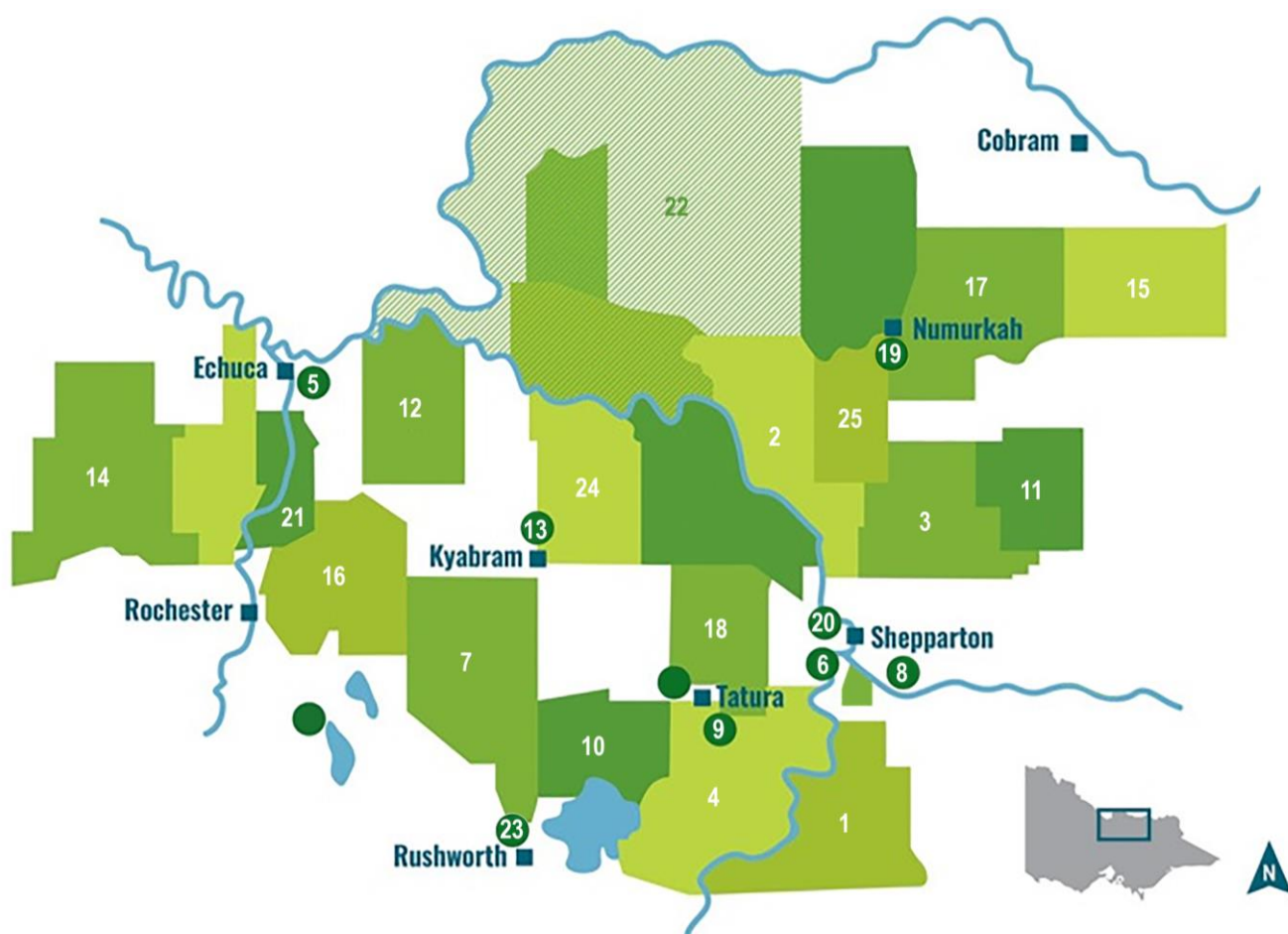
Goulburn
Murray
Landcare



CONTENTS

LANDCARE GROUPS	3
2022/2023 PARTNERS.....	3
2022/2023 OVERVIEW:	
BACKGROUND AND HISTORY.....	4
GMLN AIMS.....	4
GMLN BOARD AND STAFF FOR 2022/2023	4
GMLN ACHIEVEMENTS IN 2022/2023	5
EXTERNAL MEETINGS	5
EXECUTIVE REPORTS:	
PRESIDENT'S REPORT.....	6
TREASURER'S REPORT.....	6
REPORTS:	
FUNDED PROJECTS FOR 2022/23.....	7
LIVING THE GOOD LIFE.....	8
FLOODPLAIN ECOLOGY COURSE 2022	9
BEAD (BIODIVERSITY ENVIRONMENT AQUATIC DISCOVERY).....	10
BEAD ACTIVITY DAYS 2022/2023	11
SOILS AND REGENERATIVE AGRICULTURE REPORT	12
BIODIVERSITY REPORT	13
SHEPPARTON MOORoopna URBAN LANDCARE GROUP REPORT	14
OTHER LANDCARE GROUP NEWS	15
OCTOBER 2022 FLOODS.....	15
STAFF & MOU	
LIST OF EMPLOYEES	16
MEMORANDUM OF UNDERSTANDING	16
CONTACTING THE GMLN OFFICE	16
AUDITED FINANCIAL REPORT	17

Goulburn Murray Landcare Network Groups



- | | | |
|------------------------------------------------------------|------------------------------------------|----------------------------------------------|
| 1. Arcadia & District Landcare Group | 9. Goulburn Valley Tree Group | 18. North West Mooropna Landcare Group |
| 2. Bunbartha Kaarimba Landcare Group | 10. Harston Community Landcare Group | 19. Numurkah Urban Landcare Group |
| 3. Congupna Tallygaroopna Landcare Group | 11. Katandra West Landcare Group | 20. Shepparton Mooropna Urban Landcare Group |
| 4. Dhurringile & District Landcare Group | 12. Koyuga Kanyapella Landcare Group | 21. Strathallan Family Landcare Group |
| 5. Echuca Moama Landcare Group | 13. Kyabram Urban Landcare Group | 22. Super Parrot Project |
| 6. Friends of the Australian Botanical Gardens, Shepparton | 14. Lockington & District Landcare Group | 23. Waranga Catchment Landcare Group |
| 7. Girgarre Stanhope Landcare Group | 15. Muckatah Landcare Group | 24. Wyuna Landcare Group |
| 8. Goulburn Valley Environment Group | 16. Nannella Timmering Landcare Group | 25. Wunghnu Drumanure Landcare Group |
| | 17. Naring Landcare Group | |

2022/2023 Partners:



2022/2023 Overview

Background and History

Goulburn Murray Landcare is based in Shepparton, Victoria, and operates in the agricultural floodplains of the Goulburn Broken and North Central catchments of Victoria. It covers approximately 3,000 square kilometres and supports 25 Landcare and environmental groups to carry out their projects including sourcing funding, project management and administrative assistance.

The group was formed in 1995 and is managed by community volunteers. Goulburn Murray Landcare works to achieve sustainable land management by working closely with Local and State Government agencies, schools, local Landcare and environment groups.

Goulburn Murray Landcare obtains funding for habitat restoration, school environmental programs, community forums and courses and pest plant and animal activities. We work with community groups, Government agencies and land managers to deliver positive outcomes and to implement projects around the themes of sustainable agriculture, biodiversity and education. GMLN is proudly independent, but enjoys strong working relationships with government agencies and other community organisations.

GMLN Aims

- ✓ To support Landcare groups in the Agricultural Floodplains
- ✓ To provide opportunities for the exchange of ideas and experiences between Landcare groups
- ✓ To publicise and promote the links between sustainable production and natural resource management
- ✓ To strengthen community business partnerships, by attracting support from and building relationships with, business and industry
- ✓ To strengthen partnerships with government agencies, local government, schools, tertiary institutions, urban communities and other groups as appropriate
- ✓ To influence regional planning and policy decision making
- ✓ To seek funding for Landcare projects
- ✓ To coordinate resources and information sharing
- ✓ To encourage research partnerships with Landcare

GMLN EXECUTIVE BOARD AND STAFF FOR 2022/2023

Chairperson.....	John Laing
Vice Chair	David Sutton
Secretary	Lanie Pearce
Treasurer.....	Graham Liersch
Committee members: Joy Liersch, Helen Jeffs, Steve Jeffs, Roisin Powles, Nick O'Halloran	
Landcare Facilitator / Office Manager	Fiona Stuart
Landcare Facilitator / Soils Project Officer	Dan Walker
Biodiversity Officer	Carolena Helderman

GMLN Achievements in 2022/2023

The Goulburn Murray Landcare Network has been successful in securing funding for 2 part-time Landcare facilitators for the next three years through the Victorian Landcare Facilitator Program (VLFP). This funding will enable us to continue to deliver projects and assist our member groups.

Our key outcomes for the year are listed below:

- ❖ GMLN employed 3 individuals, and continued processing payroll for Upper Goulburn Landcare Network.
- ❖ Our office was staffed four days per week when possible, in 2022/2023 by Fiona, Dan and Carolena, with working from home still proving to be a useful option.
- ❖ We participated in 26 school and community activities, including various Clean Up Australia Day sessions, National Tree Day, school tree planting sessions, and various school education days in conjunction with RiverConnect.
- ❖ We held a number of education days and were able to reach approximately 3,300 students. The students appreciate being outside the school environment to learn about our local flora and fauna.
- ❖ We once again successfully coordinated and ran the Floodplain Ecology Course at Morning Glory Resort in Barmah. The October 2022 course was well attended with positive feedback received about the course.
- ❖ We held 10 very successful “Living the Good Life” events. It is always pleasing to see new faces and ideas emerge with this project.
- ❖ We received our second year payments for the Facilitator Funding through the Victorian Landcare Facilitator Program. This funding has now been extended through until June 2025.
- ❖ We made submissions and participated in community consultations such as the Farm and Environment working group, RiverConnect, GBCMA Chairs meetings, VLC meetings and conference and various local council meetings.
- ❖ We entered into a Memorandum of Understanding with Campaspe Shire Council to undertake tree planting in conjunction with the Waranga Catchment Landcare Collective as part of the Queens Jubilee program.
- ❖ 2022/23 was again a disrupted year for the Network, but not due to Covid. In October 2022 our area was hit by the floods with Shepparton and Mooroopna being cut off for a number of weeks and dozens of families left without homes.

External Meetings

Staff attended a number of meetings, both online and in person, throughout the year including:

- Coordinators and Facilitators meetings
- Network Chairs meetings
- RiverConnect IAC meetings
- Farm and Environment Working Group
- Shepparton Irrigation Region Project Information Committee (SIRPIC)
- Environment and Sustainability Committee (Moiria Shire)

Executive Reports

Presidents Report

It has been a busy year. Goulburn Murray Landcare Network has continued our working relationship with the Goulburn Broken Catchment Management Authority, being involved in the Shepparton Irrigation Region People and Planning Integration Committee, Farm and Environmental Working Group, Wetlands Advisory committee, Network Chairs and RiverConnect.

We continue to be an on ground activities partner with The City of Greater Shepparton through RiverConnect. This is achieving good outcomes in both school and general community activities. Thanks to Al and Alison for their great support. In addition to this Fiona, Dan, Lanie, Carolena and Jo Doolan have been out giving away plants, knowledge and advice about what, where and how to grow and maintain local plants. Fiona, Dan and I have been having a busy year getting out to many schools. With more events scheduled, the rest of the year looks like continuing this way.

Resource Management issues continue to impact both production and biodiversity resilience in our region. The amount of water leaving the region to service high downstream summer usage is starting to have an impact upon the future viability of our irrigation region. This seems bizarre when you take into account the amount of money that was spent upgrading our regions irrigation infrastructure. We have given up all the on farm water efficiency gains to run a massive off farm water inefficiency program! The environmental damage being done with this water transfer is well known and goes against the Victorian Government's stated position of caring for our natural environment.

I would like to thank all the people who have contributed to Goulburn Murray Landcare activities and events during the past year. Fiona has done a great job juggling keeping the office working properly, organising and running activities and keeping the executive committee on track. Dan has been very busy organising and participating in planting days, getting around the groups and helping keep things running smoothly. Carolena has been finishing off some projects with the GBCMA. This has meant a lot of revisiting sites that had been adversely impacted by last years floods. It is with some sadness that we say goodbye to Tony Kubeil who has left the GBCMA to become a paramedic. Tony has been the regional Landcare coordinator for many years and his knowledge and support will be missed. Good luck with the new direction.

Please check out the rest of our annual report to see what else has been happening, or in the case of the Floodplain Ecology Course, which is about to happen.

Thank you Landcarers.

John Laing
Network Chairperson

Treasurer's Report

As everyone knows, costs are on the way up everywhere. Fiona mentioned recently how much extra its costing to run the Flood Plain Ecology course this year, which has increased the participants fees correspondingly. Plus, our Government Facilitator funding has just another year to run. So, there are a few headwinds to keep an eye on.

At present finances at Goulburn Murray Landcare Network remain in good shape under Fiona's careful management. This has enabled Fiona, Dan, and Carolena to run all our programs as planned.

A new development at GMLN under a fee for service regime. Dan is trialling providing advice and the planning of revegetation work for local landholders, this could be advantageous for all parties.

Thanks to John for his leadership and our staff, Fiona, Dan, and Carolena, we have had another successful year at GMLN.

Graham Liersch
Network Treasurer

Reports

Funded Projects in 2022/23

Funding Source	Amount <small>ex GST</small>	Grants included
DELWP – Victorian Landcare Grant	\$17,500	Living the Good Life 2023
Australian Government National Landcare Programme	\$10,000	Floodplain Ecology Course – October 2022
Australian Government National Landcare Programme	\$26,000	Grey Box: Linking Landscapes and Communities
Australian Government National Landcare Programme	\$82,319.60 (2019 to 2023)	Growing Regenerative Farming Systems (also known as From the Ground Up)
Goulburn Broken Catchment Management Authority (GBCMA)	\$1,500	Climate, Water and Soils: Using technology and observations for management decisions in Agriculture
Goulburn Broken Catchment Management Authority (GBCMA)	\$6,000	Biodiversity Response Planning: Landholder visits in the Agricultural Floodplains.
Australian Government - Dept of Industry, Science, Energy & Resources	\$13,900	Planting Trees for the Queens Jubilee

We were once again successful in securing funding from the GBCMA and the State Government Victorian Landcare Grants to continue our highly successful **“Living the Good Life”** project which is aimed at getting small landholders interested in landcare activities and providing them with information to better manage their land. This is always well supported by the community and is a great project which we hope will continue on next year.

We unfortunately missed out on funding for our education **Biodiversity Environment Aquatic Discovery (BEAD)** program again this year, however this didn't stop us from continuing to support our local schools and community groups through the provision of environmental education (see BEAD report).

We were provided funding from the GBCMA to help deliver the **Greybox: Linking Landscapes and Communities** project which will deliver actions to improve the condition of the threatened Grey Box Grassy Woodlands and derived native grasslands. This work was undertaken by our Biodiversity Officer, Carolena.

We again received some funding from the GBCMA for the **Floodplain Ecology Course** which is always popular and booked out in advance.

Our soil projects received funding through the Victorian Landcare Grant and Federal funding via GBCMA under the **From The Ground Up** banner. This has allowed the learning to continue in the Regenerative Agriculture space. We also received additional funding through the Goulburn Broken CMA for a **Climate, Water and Soils: Using technology and observations for management decisions in Agriculture** workshop.

Dan was also able to secure funding through the Australian Government; **Planting Trees for the Queens Jubilee** program which has allowed us to plant trees, install a commemorative plaque and hold an event in honour of The Queen's Jubilee. This will increase shade and provide habitat for native fauna in these areas.

There are more detailed reports for the projects mentioned above further on in the report. Thank-you to all the Landcare volunteers who have supported GMLN projects. Without you we would not be able to continue delivering these projects.



The **Living the Good Life** project provides access to practical information to local landholders across the agricultural floodplains and brings together new and existing small landholders to gain valuable skills and knowledge and enable them access to resources that will encourage them to make their properties more sustainable and environmentally viable.

Living the Good Life workshops and presentations for 2023 consist of:

- Our **Backyard Biodiversity and Native Plant Sale** was well attended with over 200 attendees coming along for advice from our passionate native plant enthusiasts on property and garden goals and how your garden can contribute to our local biodiversity, with many people purchasing plants from the Native Plant sale on the day as well.
- **Trees for Mum** – May 2023. We attended the annual Mothers Day Classic fun run in both Shepparton and Echuca with our Trees for Mum project where we gave out approximately 500 plants to mothers and mother figures on the day.
- Our **Introduction to Permaculture workshop** was booked out in two days with everyone wanting the chance to hear David Arnold from Murrnong Permaculture Farm give an engaging introduction to the principles and techniques of permaculture focusing on choices and design strategies to increase our household and community capacity, self-reliance and resilience.
- Other proposed events for our Living the Good Life funding project include a bus trip to explore and learn about the sensational **Euroa Arboretum**, a Native plant propagation & seed collection workshop in conjunction with the Koyuga Kanyapella Landcare Group, a **Wildflower Walk** at **Dookie** in conjunction with our friends group 'Dookie Life', and a **Breakfast with the Birds** event to celebrate Bird Week in October.

This project also funds our annual **Farm Forum** series, with topics for this years series including:

- An **On Farm Bugs & Brews** workshop with David Hardwick presenting a practical hands on session where learnt how to make inoculants, bio-stimulants and biofertilisers on-farm using practical fermentation based techniques
- **Environmental water and fauna monitoring in our rivers, creeks and wetlands** with the Goulburn Broken CMA River Health & Environmental Water team will sharing their knowledge and experience on what's involved in planning, delivering and monitoring environmental water releases in our local rivers, creeks and wetlands.
- Danny Pettingill from Firetail Environments will also present a **Drones in Ag & Maize Field Day** to see small and large drones in action and to gain a greater understanding how they can be an asset to your business, with demonstrations of spraying, spreading and mapping capabilities including in crop and paddock demonstrations

We always endeavour to include local Landcare groups as the host of these activities to encourage participation from people who might not otherwise attend other Landcare activities. This year the host groups included Dhurringile Landcare Group, Goulburn Valley Tree Group, Muckatah Landcare Group, Koyuga Kanyapella Landcare Group and Dookie Life.

This project continues to appeal to a new group of people may not have been involved in traditional landcare group activities in the past. This means the Landcare message is getting further into the community and including a wider range of people.

Floodplain Ecology Course 2022



This year we celebrated the 13th year of The Floodplain Ecology Course which was held in October 2022. We have been blessed with a wonderful course that consistently draws amazing presenters with great depths of knowledge and the ability to impart their information with passion and good humour.

We are grateful for the continued input and support from Keith Ward (GBCMA) (AKA Floodplain Man), Neville Rosengren (Geomorphologist) and Ian Rutherford (Geographer and fluvial geomorphologist) who were so generous with their time and knowledge.

The attendees come from such varied backgrounds and areas of expertise. All come with the hope they will gain insights into floodplain operations and management. Everyone has such great expectations when they arrive because most of our participants have booked into the course on recommendations from past attendees.

Morning Glory Resort is a fantastic venue and engages them from the beginning. The staff are so helpful and answer every request we have quickly and efficiently. We cannot thank them enough.

Next, we have the food!!! Doug and Kaye from Murphs Roving Roast cater for all meals during the week. Highlights are always the Bush Banquet and of course “curry night”. Doug makes us all feel special with his amazing meals and generous servings. We all go home happy and perhaps with a larger size belt.

This year we received some funding for the course through the Goulburn Broken Catchment Management Authority. They continue to support us both financially and by allowing staff members to present topics for us.

Accolades to our presenters for their generosity with both time and knowledge. We cannot run the course without them. Instructors & presenters for the October 2022 course included Keith Ward (GBCMA), Neville Rosengren (LaTrobe University), Ian Rutherford (University of Melbourne), Darren Baldwin (Rivers & Wetlands), Daryl Neilsen (CSIRO), Damien Cook (Wetland Revival Trust), Lindy Lumsden (DEWLP Arthur Rylah Institute), Greta Morgan, Hilda Stewart & Ralph Hume (Parks Vic), Sue Logie (Superb Parrot Project), Zeb Tonkin (Arthur Rylah Institute), Keith Chalmers (VEWH), Nick O’Halloran (Ag Vic), John Laing (GMLN Bug extraordinaire), Graham Stockfeld (Turtles Australia), Jo Geddes (GBCMA) and Michael Shackleton (Latrobe University). Thanks to everyone for their continued assistance.

Thankyou to all the presenters and attendees for another fantastic course. It is an exhausting but rewarding course that continues to draw fantastic numbers.

Thankyou for trusting me to deliver this project.

Fiona Stuart
Project Coordinator



Whilst our BEAD program did not receive funding in 2023, it continues to be a valuable part of environmental learning for our schools and local community, and this year we reached over 3,300 people who participated in at least one of our learning activities. We continue to engage as many students and community members as possible in spending time in their local environment and appreciating their surrounds, and have developed new activities and continue refreshing the ones we have in order to reinvigorate enthusiasm for the program and keep participants engaged.

These are some of the events we were able to attend throughout 2022 and 2023:

- **Dharnya Day – NAIDOC Week 2022.** We are always happy to attend NAIDOC celebrations at Barmah. This has become an annual event on our calendar and it's great to see such a wonderful turn out. The weather was amazing and it was great to see so many attend the day, and as always, the tucker was amazing!
- **Clean Up Australia Day** – we were involved in an activity session with children from various schools in Nathalia who assisted in cleaning up the Recreation Reserve followed by various environmental activities, followed by a bbq. We also assisted Berry Street with their Rubbish collection activity at Princess Park. The children were all fascinated at the types of rubbish that had been dumped and were proud to have left the area in such a clean state afterwards.
- We ran several **Tree Planting days** with various schools throughout the year, including Nanneella and Rochester Primary Schools, Flinders College, Lockington Primary School, and Cobram High School, with a total of over 850 trees being planted.
- **World Rivers Day** – we joined forces with RiverConnect to run a school holiday session at Kidstown with various activities and games, with around 300 people turning up to take part.
- **Campaspe Carp Catch** – A fantastic day was had by all for the 10th annual Campaspe Carp Catch in Rochester. Over 250 participants registered and over 200 Carp were removed from the river, with the biggest carp weighing 3.7kg and measuring 72cm long caught by a 6 year old!
- **Rumbalara Bush Revival** – we had a huge day at the Rumbalara Bush Revival event with 5 schools and approximately 300 children in attendance rotating through various activities and workshops. John was kept busy with his Mini Beasts whilst other sessions by other organisations including tree planting, nature art, cultural artefacts and Parks Junior Ranger activities. Overall approximately 750 understory and shrubs being planted!
- **Various education activity days** – a number of education activities were held with local primary schools or the general community including the Family Haven Mooroopna, Colbinabbin Kindergarten and Primary School, Toolamba Primary School, Sacred Heart Primary School, Tongala Primary School, National Tree day planting, World Rivers Day at Kidstown, Nurture Nature session at Seven Creeks Estate, World Wildlife Day at Ferrari Park, Bat Night at Cussen Park, and much more.

Regardless of the event we are attending, you can always be guaranteed that John and his collection of Mini Beasts will always be the centre of attention. We are forever grateful for his dedication and passion to teach children (and adults too) about the various types of terrestrial invertebrates in our environment.

Special thanks to all our support teams that we work with regularly, from Parks Vic; COGS; Moira Shire; GV Water; GBCMA; Landcare groups and individuals. Your enthusiasm and assistance is invaluable in enabling us to deliver this project.



BEAD Activity Days in 2022/2023

Date	Name	Location	Description	Attendance
6.7.2022	Dharnya Day (Naidoc Week)	Barmah National Park	Various activities	1000
22.7.2022	Nathalia Community Cleanup	Nathalia Rec Reserve	Rubbish collection & various games	90
31.7.2022	National Tree Day	Huggard Drive, Mooroopna	Tree planting	150
1.8.2022	Nannella & Rochester PS Tree planting day	Nanneella	Tree planting	60
31.8.2022	Flinders College tree planting	Kanyapella	Tree planting	20
13.9.2022	Lockington PS	Pine Grove Cemetery	Tree planting	60
14.9.2022	Nathalia PS	Nathalia PS	Tree planting	60
17.9.2022	Whiteheads Creek habitats	Seymour	Water bugs	30
25.9.2022	World Rivers Day	Kidstown	Various activities	280
8.10.2022	Waranga LCC launch day	Rushworth	Various activities	40
16.11.2022	Colibinabbin Kinder & PS	Colbinabbin	Various activities	75
17.1.2023	Nurture Nature	Seven Creeks Estate Kialla	Various activities	65
19.1.2023	FamilyCare	Shepparton	Mini Beasts	10
24.1.2023	Family Haven	Mooroopna	Various activities	25
19.2.2023	Campaspe Carp Catch	Rochester	Fishing	250
28.2.2023	Berry Street Clean Up Day	Princess Park Shepparton	Rubbish collection	40
15.3.2023	World Wildlife Day	Ferrari Park Mooroopna	Various activities	150
28.3.2023	Toolamba PS	Toolamba	Various activities	100
15.4.2023	Bat Night	Cussen Park Tatura	Various activities	100
18.4.2023	Nurture Nature	Kidstown	Various activities	150
17.5.2023	Rumbalara Bush Revival	Rumbalara Aboriginal Co-op	Mini beasts	300
25.5.2023	Sacred Heart PS	Sacred Heart Tatura	Various activities	125
30.5.2023	Cobram High School	Strathmerton	Tree planting	26
31.5.2023	Cobram High School	Strathmerton	Tree planting	24
7.6.2023	Tongala Primary School	Tongala PS	Various activities	55
19.6.2023	Sacred Heart PS	Sacred Heart Tatura	Various activities	95
				3380

d



Soils & Regenerative Agriculture Report 2022/2023

Growing Regenerative Farming Systems: 2019 - 2023

The Growing Regenerative Farming Systems project (From the Ground Up), which was funded through the Australian Government's National Landcare Program, finished in July 2023 and was aimed at providing practical learning opportunities where farmers and land managers come together and hear from experienced presenters and share their own experiences in regenerative agriculture practices and principles.

Throughout the duration of this project, 10 events and workshops were held, reaching 127 participants and 101 hours of content delivered.

The events delivered included:

- Regenerative Grazing with Colin Seis
- Holistic Management planned grazing full course - Inside Outside Management
- Grazing benefits of annual multispecies fodder x 2 - with Colin Seis
- On Farm Soil monitoring session - with Jo Doolan
- Regenerative Farm field day - Zanker Farm
- Introduction to Holistic planned grazing - Judi Earl
- Horse health and pastures - Judi Earl and Kentucky Equine Research
- Holistic Management refresher - Judi Earl
- Climate soil and water seminar - Ag Vic and Soils for Life

This project was extremely beneficial in allowing us to work with farmers, industry and community groups to improve farm soil health, native vegetation and biodiversity to boost the region's agricultural productivity and profitability and the nature resource base on which it depends.



Dan Walker
Project Coordinator

Biodiversity Report 2022/2023

My work this year came under the Linking Landscapes funding stream, which is Supported by the *Goulburn Broken CMA*, through funding from *the Australian Government's National Landcare Programme* which came to an end on June 30th 2023.

For the length of the five year project, a group of 9 (which included Landcare Facilitators, Regent Honeyeater Project Coordinator, Trust for Nature representatives and GBCMA Biodiversity Team staff) would meet monthly. At these meetings we would present the properties that had submitted a funding EOI and had been visited. This presentation included mapping, species information, requested works eg. Fencing, planting tube stock, spraying, direct seeding and a final score presented with photographs from my visit.

Some of the 'Expressions of Interest' were just visits which resulted in providing educational materials and support and were not suitable for funding.

In total, 7 Landholder Agreements with GBCMA were finalized and works completed within the five years, another 4 agreements were completed but did not go through. There were a large number of visits and enquiries which resulted in site visits. The revegetation was spaced out over several years and due to flooding, four properties received supplementary plantings.

The works themselves were completed by contractors for the fencing works. Landholders, Landmate crews, Woka Walla crews, Landcare staff and landholders contributed to the planting of tube stock. A smaller amount of direct seeding was undertaken with successful results.

Koonoomoo Revegetation Case Study

One of the most successful revegetation outcomes was in Koonoomoo where a 20m wide, 1km long corridor linking Sheep Wash Creek to Ulupna Creek was planted and fenced and supplemented with tube stock the following year.

You can see that in 2019 it was in drought and by August 2023 the fully grown shrubs and trees are filled with the sounds of small birds such as wrens and frog calls providing excellent habitat. These small species can now travel the corridor from the River Red Gum at Sheep Wash Creek linking to Grey Box, Plains Woodland at Ulupna Creek. The above case study certainly achieves what the project set out to do!



Achievements of the GBCMA's 'Linking Landscapes' project to protect Grey Box Woodlands between 2018-2023:

- 1385 people attended community events/field days/workshops.
- 540 hectares were revegetated at strategic locations.
- 4,448 hectares of weed control and 2,876 hectares of pest animal control was undertaken
- Over 16 kilometres of exclusion fencing.
- The project encouraged 249 land managers to protect the 'paddock trees of the future' by installing 800 purpose-built paddock tree guards and highlighted the importance of fallen timber and the organic ground layer in the Grey Box Grassy Woodland ecosystem.

Carolena Helderman
Project Coordinator

Shepparton Mooroopna Urban Landcare Group

Shepparton Mooroopna Urban Landcare Group have a new President Wendy D'Amore. Secretary Helen Jeffs, Minute Secretary Meg Pethybridge, Treasurer Gerry Goonan, Land Managers Rep Phil Croke, Media Paul Hockett, Committee Sharon Way. GMLN Reps Helen and Steve Jeffs.

SMULG has representatives on the GMLN committee, the RiverConnect Land Managers group, the Environmental the Botanic Gardens Advisory Committee, Community Environmental Groups meeting and has a strong collaboration with Friends of the Australian Botanic Gardens Shepparton (FoABGS).

Gerry Goonan's volunteering and achievements over his past 5 years as President and being a member from SMULGs beginning were recognized at the SMULG AGM held in April. And this year we recruited 4 new members.

Our activities have included assisting Kylie Hoskin, Council Environment Officer with One Tree per Child planting at Rumbalara in partnership with RiverConnect National Tree Day, at St Marys Primary School and assisted RiverConnect with events.

Mooroopna Golf club requested SMULG to support a Grant application to regenerate land around the golf club, SMULG members walked with Golf club members around the proposed site and had dinner at the club. Wendy wrote a letter of support for their Victorian Landcare Grant application.

Evening with John Pettigrew outlining the Murray Darling Basin Plan to SMULG members. SMULG wrote a letter of support for Shaping Greater Shepparton/ RiverConnect strategic plan.

An application for a ParksVic Grant, to take Refugees into the bush, led by Gerry, auspiced by GMLN, was successful. Events were planned in liaison with St Georges Rd Community Hub, Picnic for Peace and ESL centre and Parks Vic. However due to weather and flooding two events have been cancelled - Bird ID and Planting. A spotlight night and fishing event will hopefully go ahead and bird walk rescheduled. As part of this grant, Helen is organizing the purchase and design of a banner for SMULG to display at events.

Boulevard Bush Reserve Community Day Spring Walk supported by RiverConnect was a success. Plantings around Royce Dickson's memorial seat were lost in the flood. His seat was re-oiled and plants from One Tree per Child, GSCC were used to replant at August meeting.

Members assisted at Clean up Australia Day GSCC/RiverConnect event at the Botanic Gardens and had our own clean up at Reedy Swamp with ParksVic assistance. Unfortunately, the Botanical Gardens Open Day in which we were going to have a display was cancelled due to the weather.

Weeding Wednesday group, evenings in the warmer months and mornings in the winter months. Weeding at Botanical Gardens and Reedy Swamp, supported by land managers, RiverConnect and Friends of the Australian Botanic Gardens, targeting nightshade, Bathurst Burr and Noogoora Burr. We trialed weeding with Berry Street school, with Allison Trethowan's support, and will try to continue in warmer months.

We thank GMLN for their valued support throughout the year.

Helen Jeffs
SMULG Secretary

Other Landcare Group News

Throughout 2022-2023 we made a conscious effort to get re-acquainted with our local Landcare Groups that we had lost touch with throughout Covid. It's been wonderful to see many of our Landcare Groups hosting a variety of working bees, tree planting days, rubbish collection days, weeding sessions, and many other Landcare events.

This year we welcomed Dookie Life to our network of community groups, and anticipate a great turnout at our upcoming Wildflower walk in the Dookie Bushland reserve.

We look forward to continuing to support our groups throughout 2023-2024.

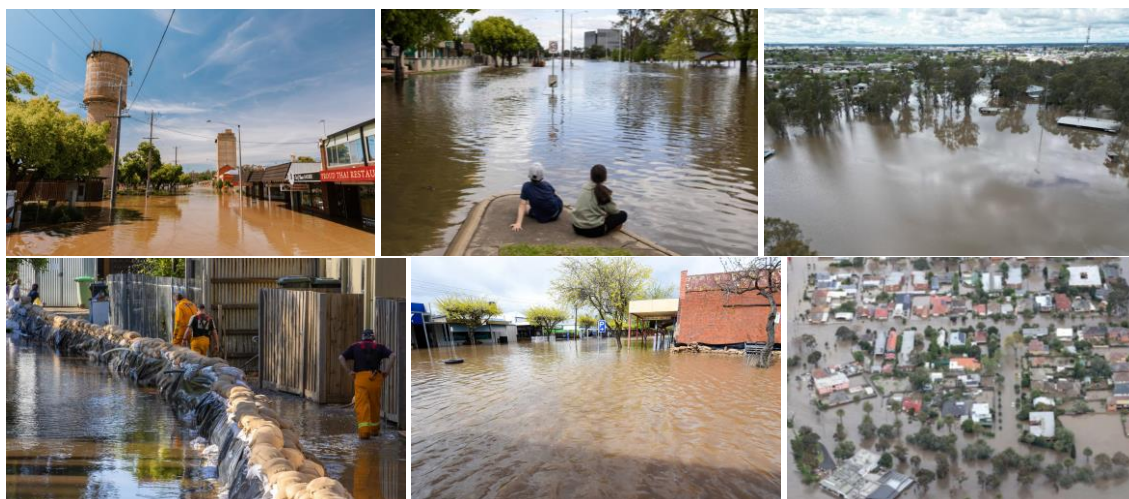


October 2022 Floods

In October, our Catchment experienced significant flooding due to intense rainfall events in our catchment along the Campaspe, Goulburn and Murray Rivers including the towns of Shepparton, Rochester and Echuca. Communities lost homes, businesses, infrastructure, roads and crops.

Like most regional communities, in times of emergency, the community steps up, and there was never a shortage of volunteers to assist, whether it was filling sandbags or delivering food to those in need, the local community went into action. The commitment and resilience of the volunteers was evident during this emergency response and there was no issue in sourcing numbers of volunteers.

A number of grants were introduced to assist flood affected areas and after several months, our catchment is slowly getting back on track. Let's hope we never have to experience anything like that ever again though.



Staff & MOU

List of Employees

GMLN staff for 2022/2023 included:



Fiona Stuart – Landcare Facilitator

Fiona worked four days a week coordinating BEAD and Living the Good Life projects for 2022/2023, along with coordinating the annual Floodplain Ecology Course, whilst also maintaining the administrative duties for the office.



Dan Walker – Landcare Facilitator

Dan worked three days a week throughout 2022/2023, focusing on the Growing Regenerative Farming Systems project, Living the Good Life events, and making strong connections with our Landcare groups.



Carolena Helderman – Biodiversity Officer

Carolena works one day a week and oversees the Greybox: Linking Landscapes and Communities project.

Isuzu D-Max – 2022 saw GMLN upgrade from the Ford Mondeo to a 2021 Isuzu D-Max with canopy storage on the back. This makes travelling around so much easier. Huge thanks to the Mooroopna Mens Shed for our fantastic and very useful new canopy storage shelves.



Memorandum of Understanding

We also have a Memorandum of Understanding with the following Networks to provide payroll services:

- ❖ Upper Goulburn Network

Contacting the GMLN Office

Office Location: 82 Wyndham Street, Shepparton 3630
Telephone: (03) 5821 3530
Email: info@gmln.com.au
Website: www.gmln.com.au