

The Network



Goulburn
Murray
Landcare

SPRING 2019

In this issue:

Welcome	1
Soils News	2
Living the Good Life News	3
BEAD News	3
GMLN Diary	4
Landcare Groups Update	4
Funding Opportunities	5
Contacts	5
Membership	6

GMLN EXECUTIVE

President: John Laing, *Dhurringile*
Vice President: Dave Sutton, *Naring*
Treasurer: Graeme Liersch,
Koyuga/Kanyapella
Secretary: Lanie Pearce, *Nathalia*
Committee members:
 Collier McCracken, *Arcadia*
 Helen Jeffs, *Shepp/Mooroopna*
 Steve Jeffs, *Shepp/Mooroopna*
 Joy Liersch, *Koyuga/Kanyapella*
 Glen Thompson, *Wyuna*

If your group does not have a representative on the executive and would like to be included, please contact anyone on the list above to discuss further. We meet monthly and welcome input from all our Landcare groups and associated membership groups.

Contact us:

Goulburn Murray Landcare Network
 82 Wyndham Street,
 Shepparton VIC 3630

Tel: 03 5821 3530

Email: info@gmln.com.au

Web: gmln.com.au



Welcome & congratulations...

Welcome to our new look newsletter. We have had a very busy year and have lots to catch you up on. If you have any news or events that you would love included in the next newsletter, then please email your details to info@gmln.com.au

The 2019 Victorian Landcare Awards were held recently at Government House and we are thrilled to congratulate **Lanie Pearce** who won the Joan Kirner Landcare Award.



Lanie has been involved in Landcare for around 20 years and is the Community Education Coordinator for GMLN. Her talent for delivering quality environmental education to both children and adults is well-recognised across the region. She has designed numerous games for children based on the value of using stories to engage and educate.

Lanie consistently finds innovative ways to spread Landcare's messages. Through her commitment to environmental education she is building the skills and capacity of our next generation of land managers.

Congratulations also to **Fraser Pogue** who won the Australian Government Landcare Farming Award. Irrigated cropper **Fraser** demonstrates excellence and leadership in sustainable farm practices on his Ardmona farm. He believes that a sound basis for solving our farming problems is "doing what's best for you, your soils and your farming future". Fraser is continually reading, investigating and trialling different farming techniques on his property. His approach is to pull apart what doesn't work and develop systems that meet the needs of his property.



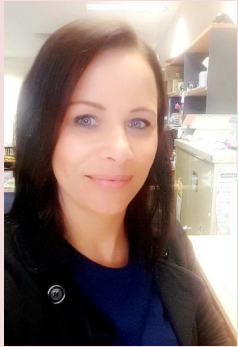
You can read more about Lanie and Fraser's awards along with all the other Award winners at <https://www.landcarevic.org.au/state-government-news/2019-victorian-landcare-awards-winners/>

Congratulations again to Lanie and Fraser.



Welcome Fiona

Welcome to Fiona Stuart who joined us at the end of August. Fiona will be looking after the office and taking on a Facilitator role.



When she is not at work, Fiona's two boys keep her busy and she can often be found at the football oval for training, a match or just a kick of the footy.

Pop in and say hi and welcome her to the Landcare family.

SOILS REPORT

November 2019

More than ever soils are in the forefront of farmers minds & Regenerative farming methods are proving to be helpful in coping with the challenging conditions we are faced with. By building soil health; increasing organic matter levels, soil carbon & soil biology habitat we can improve the soils water infiltration and cycling of nutrients which all help plants to survive.

Key messages are:

- to keep the soil covered.
- try to have actively growing plants year round (increase perennial species)
- manage grazing for plant recovery
- reduce use of pesticides, herbicides & fungicides
- increase species diversity to build resilience

The **Digging Deeper Soils Course** is currently running. Three days have been completed with three go to. Participants applied through an EOI process and committed to the 6 day course. 11 properties are represented covering cropping, dairy, grazing, beef and wool production. The group are very engaged and are enjoying the hands-on nature of the course. By the end of the course participants will have a high level of confidence to manage their own soils, identifying constraints and taking effective action to address soil issues that are impacting on the farm business and landscape.

This course is supported by the Dept of Agriculture & Water Resources, through funding from the Australian Government's National Landcare Program.

~ Jo.



Stop soil erosion, Save our future is envisaged to raise awareness on the importance of sustaining healthy ecosystems

and human well-being by addressing the increasing challenges in soil management and, raise the profile of healthy soil by encouraging governments, organizations, communities and individuals around the world to engage in proactively improving soil health. What conversations can you spark around the importance of conserving soil and preventing its loss? Discuss ideas to help support our food security and help save our future. #worldsoilday

The frogs are calling

Your help is needed to find out how frogs respond to the watering of wetlands. And anyone can become a frog citizen scientist - just download the FrogID app and visit wetlands across northern Victoria to record calling frogs. You'll be contributing to valuable scientific research, and having a great day out!



For more information visit www.frogscalling.org or search **The Frogs Are Calling You** on Facebook.

Living the Good Life



A huge thanks to Award Winning Illustrators Kate Jenvey and Margaret Zaal who hosted Botanical and Nature Illustration Workshops at Kidstown on Saturday 23rd November, 2019 as our last Living the Good Life event for 2019. Everyone had a wonderful day with some amazing pieces of art being displayed by the end of the day and many helpful hints and tips being taken away. Thanks to Kate and Marg for sharing their expert knowledge.



2019 Bush Picnic

Our Annual Bush Picnic for 2019 was a great success with 50 people coming along to Stockyard Plains at Harston on a hot windy evening. Guests enjoyed a relaxing meal with an informative presentation from Jo Deretic about the local Brolgas and wonderful birds and fauna of our local wetlands.

Harston Landcare are to be commended on their works over the years at the reserve & the care they give it. Stockyard Plain is definitely worth a visit.

A brolga chick, born on a Harston dairy farm in September, appears to be growing well. Emily and Duncan Crawford maintain the wetland on their property where the brolgas are living.



We enjoyed two days on the banks of the Broken Creek at Nathalia playing education games with the children from Nathalia Primary School and St Francis. The children had a great time learning about animals different tracks and scats, and biodiversity and animal habitats. John's bugs were popular as ever with many children enjoying the thrill of being able to hold a spider or slug.



Thanks to John, Lanie, Jo and Fiona for a great day. Lanie and Fiona also helped out with activities at Tongala and Euroa for National Water Week (21–27 October 2019), hosted by GV Water.



2019 Floodplain Ecology Course

October 2019 saw the Floodplain Ecology Course at Morning Glory Resort, Barmah celebrating its 10th year.

The course is a week long, high intensity learning experience covering geology and landscape history and climate; how floodplains are formed; geomorphology, hydrology and hydraulics of floodplains; floodplain soils, vegetation and fauna; and the biogeochemical processes and functions on the flood plain.

There was lots of fun and plenty of learning with great enthusiasm from the participants and presenters.

A huge thankyou to Lanie for running this for her 10th year and to all the presenters who were so generous with their time and knowledge.

The 2020 course is almost full so get in fast to secure your place. Contact the office on 03 5821 3530 or email info@gmln.com.au

Calendar

DECEMBER

Tuesday 3rd December 2019 at 8.30pm

See the nocturnal native animals that call our bushland home at the next Spotlight walk. Meet at Victoria Park lake, across from the sheds on Tom Collins Drive. Places are limited so please register by email to riverconnect@shepparton.vic.gov.au or phone 03 5832 9700. Hosted by RiverConnect in partnership with Activities in the Park.

Thursday 5th December 2019 at 5.30pm

Friends of the Australian Botanical Gardens invite you to the Lectern Launch at the Botanic Gardens, Shepparton. The lecterns have been designed and installed with the aim of informing visitors of the native flora and fauna to be experienced on a walk through the Gardens.

Saturday 7th December 2019, 10.00am to 4.00pm

Come down to the Victoria Park Lake in Shepparton for a fun and free family fishing day. Everything is provided so youngsters can cast a line and try fishing in a safe and supportive environment. No pre-booking required - registrations will be taken on the day at the event. Hosted by Victorian Fisheries Authority.

Wednesday 11th December at 12.00pm

The last GMLN Executive Meeting for 2019 will be held at the Overlander Hotel from 12pm. All welcome. Please RSVP to the office if you would like to come.

Friday 15th December 2019

Digging Deeper Soils Course day 4.

Tuesday 17th December 2019 at 9.00am

Shepparton Mooroopna Urban Landcare Group last tea bag retrieval day will commence at Reedy Swamp at 9am, and then move on to Gemmils. Contact SMULG for further information.

The GMLN office will be closed from Friday 27th December and will reopen on Monday 6th January 2020. We hope everyone has a safe and happy festive season.

*To keep up to date with what is happening,
follow us on Facebook at
www.facebook.com/gmlandcare*



Kyabram Urban Landcare Group Update

Well done to Kyabram Urban Landcare Group who recently planted 300 eucalyptus trees at the Ern Miles Reserve to guarantee a future supply of gum leaves for the koalas at the Kyabram Fauna Park. The Landcare volunteers will nurture the trees over the summer with regular watering, mulching and weeding to ensure a good survival rate under current drought conditions. The plantation will take a couple of years before the trees are ready to harvest for koala food.

A huge thank you to Scott Wise from Rochester Native Nursery for many months of germinating and growing the seedlings ready for planting plus teaming up with Campaspe Shire Council to donate the hundreds of trees plus tree guards and to Kyabram Urban Landcare Group, Rochester Native Nursery and Campaspe Shire Council for their work and donations.

Koyuga Kanyapella & Wyuna Landcare Group Updates

Koyuga Landcare Group planted 470 plants at Odea Road in September with help from year 10 and 11 students from Flinders College. Landcare group members are watering and tending to the plants over summer.



Wyuna Landcare Group took part in a plant survey on a roadside that is a known site of the threatened Turnip Copperburr plant. The group learnt about the diversity of species in grasslands and how they can manage them on their farms.

SAVE THE DATE

2020
NATIONAL
LANDCARE
CONFERENCE

WEDNESDAY 11 TO
FRIDAY 13 NOVEMBER



Funding Opportunities

Linking Lower Goulburn Project

The GMLN will provide extension to landholders who express interest in undertaking environmental works that align to the Linking Lower Goulburn project area and project requirements. If you are located in the below locations then you may be eligible for funding for fencing and revegetation of 20 mtr wide corridors.

Funding areas include Picola, Echuca/Moama, Picola West, Waaia, Yielima, Yalca, Bearii, Barmah, Kotupna, Bunbartha, Tallygaroopna, Kaarimba and Coomboona.

Contact Carolena on 0408 618 204 or email carolena@gmln.com.au for further information.



Communities Combating Pests & Weed Impacts During Drought Program

Thanks to a grant through the Australian Government's *Communities Combating Pests and Weed Impacts During Drought Program* funding is available to assist landholders in the Benalla and Moira municipalities to carry out work to reduce competition on fodder and native vegetation. In addition, training and upskilling activities will be run to build resilient farming practices for future.

Funding in Moria Shire is available for:

- Weed control; (*Landmate crews can be used or other contractors can be engaged if requested*)
- Agricultural Chemical User Permit (ACUP) training; and
- On Farm Biosecurity training

This project will target the control of weeds listed on the 'Victorian Noxious Weeds List'. Expressions of interest applications for weed control activities are now open.

For further information visit www.gmln.com.au, call Jo on 03 5821 3530 or email info@gmln.com.au



IMPORTANT CONTACTS

Goulburn Murray Landcare

Office: 03 5821 3530
Jo: 0412 151 652
Carolena: 0408 618 204
Lanie: 0408 103 066
Email: info@gmln.com.au

City of Greater Shepparton

Shepparton 03 5832 9700

Moira Shire

Cobram 1300 369 996

Campaspe Shire

Echuca 1300 666 535

WaterWatch

Jacinta Burke 03 5832 0400

GV Waste Resource & Recovery Group

03 5822 1300

Department of Economic Development, Jobs, Transport & Resources

Tatura 03 5835 5222
Echuca 03 5482 1922

Goulburn Broken Catchment Management Authority

Shepparton 03 5820 1100

Goulburn Broken Seedbank

www.gbseedbank.com.au

Goulburn Murray Water

Tatura 0358 335 500
Cobram 0358 710 100
Shepparton 0358 329 900

Goulburn Valley Water

Shepparton 03 5832 0400
Cobram 03 5872 2526
Tatura 03 5824 2345

EPA Litter Report Line

1800 352 555

Parks Vic:

Nathalia 03 5866 9900
Shepparton 03 5832 0222
Yarrawonga 03 5743 3104

Landcare Victoria Inc (LVI)

Susi or Kelly 03 9207 5527
Email: info@lvi.org.au

Joke Corner...



Pete and Harry were talking one day. "My wife asked me to buy ORGANIC vegetables from the market garden," said Pete.

"So were you able to find some?" Harry asked.

"Well when I got to the market, I asked the gardener, 'These vegetables are for my wife. Have they been sprayed with any poisonous chemicals?'"

"The gardener answered: 'No, you'll have to do that yourself.'"

My neighbour just buried \$100,000 in his garden.

He wanted to make his soil richer.

I bought a vacant piece of land recently, and every night someone keeps depositing soil on the land. I still can't figure out who it is.

The plot thickens.



Membership:

We are offering the opportunity for you to become a member of the Goulburn Murray Landcare Network. If you are already a financial member of a Landcare group, or a similar group, you are already covered. This is the opportunity to be a paid member, and attend **most** of our events for free (sometimes there will be a cost, but reduced for members). This is a great opportunity to become part of Landcare and keep up to date with everything we are doing and to let us know what you would like to happen. **JOIN TODAY!**



Goulburn
Murray
Landcare

**JOIN NOW AND BE
A MEMBER UNTIL
June 2020**

Goulburn Murray Landcare Network Membership Form 2019/2020

Name: _____

Address: _____

Phone: _____

Email: _____

Membership Type (Please tick) ☐ Individual \$10 ☐ Family \$15

This will entitle you to membership until June 30th 2020.

Membership to Goulburn Murray Landcare includes subscription to our email list, keeping you up to date with our seasonal newsletter and upcoming events and activities in our area. It will also give you discounted or free entry to our events throughout the year.

Cheque payable to Goulburn Murray Landcare Network or

Direct Deposit: Account name: Goulburn Murray Landcare Network

BSB: 633 000 Account No: 133 815 845

(Use MEM followed by your name as a reference)

Please send to Goulburn Murray Landcare Network, 82 Wyndham Street, Shepparton, VIC 3630