

Wildflowers

of the Plains and Low Hills of Northeastern Victoria

This brochure shows a selection of wildflowers from the plains and low hills in the Goulburn-Broken and Northeast catchments (see map at back). The photos may assist in identifying some of the more common groundlayer species. The bioregion colour codes and the distribution map will help you with your identification. Bioregion descriptions can be found at the Department of Environment, Land Water and Planning (DELWP) website listed below. The symbol ~ indicates that no other species in that genus are likely to be encountered. Photos show plants in flower, however some colours may vary depending on location.

This brochure provides a good starting point, but many species can look very similar. See the references below for accurate species identification.

Also refer to the guide for the Wildflowers of the Foothills and Mountains in Northeastern Victoria – some of those species are also found here. Aquatic, alpine and annual plants are generally excluded from this guide.

HOW CAN I HELP?

To help to conserve places where wildflowers persist, you can:

- Join a local Field Naturalists, Environment, Friends of, or Landcare group.
- Ask your Shire to include any wildflower areas you know of in their roadside conservation plan.

If you own or manage land:

- Avoid any kind of earthworks in areas with wildflowers and native grasses.
- Avoid the application of herbicides and fertilizers.
- Talk to DELWP Biodiversity Officers about ecological burns and kangaroo grazing management.
- Talk to CMA officers about fencing and grazing management.
- Control rabbits.
- Identify and remove perennial weeds.
- Talk to Trust for Nature Victoria about Conservation Covenants.

For more information:

Goulburn-Broken Catchment Management Authority
(03) 5820 1100 www.gbcma.vic.gov.au

North East Catchment Management Authority
(02) 6043 7600 www.necma.vic.gov.au

Department of Environment, Land Water and Planning (DELWP)
Benalla (03) 5761 1611 or Wodonga (02) 6043 7900
www.delwp.vic.gov.au

OTHER REFERENCES

- Calder, M., Calder, J. & McCann, I. 2002. *Victoria's Box-ironbark Country; a Field Guide*
- Costermans, L., 1992. *Native Trees and Shrubs of South-eastern Australia*
- Cunningham, G., Mulham, W., Mithorpe, P. & Leigh, J., 1981. *Plants of Western New South Wales*
- Curtis, H. & Curtis, P., 2008. *Floodplain Woodland Plants of Northeastern Victoria*
- Department of Primary Industries, 2007. *Native Vegetation in the Shepparton Irrigation Region*
- Lunt, I., Barlow, T. & Ross, J., 1998. *Plains Wandering*
- Viridans, 2007. *Wild Plants of Victoria (CD)*
- Walsh, N.G. & Entwistle, T.J., 1999. *Flora of Victoria*

ACKNOWLEDGMENTS:

Thanks to those who provided comments on this guide.
Map produced by Phi-R Pty Ltd

Compiled by Mary Titcumb for Department of Environment, Land Water and Planning, and Sally Mann.

Published by GBCMA © Copyright of content owned by GBCMA, 2009.

Citation: Titcumb, M. (DELWP) & Mann, S. (2009) *Wildflowers of the Plains and Low Hills of Northeastern Victoria*, Goulburn Broken Catchment Management Authority, Shepparton.

Cover Photo by Sue Berwick

© The State of Victoria Department of Environment, Land, Water and Planning This work is licensed under a Creative Commons Attribution 4.0 International licence. You are free to re-use the work under that licence, on the condition that you credit the State of Victoria as author. The licence does not apply to any images, photographs or branding, including the Victorian Coat of Arms, the Victorian Government logo and the Department of Environment, Land, Water and Planning (DELWP) logo. To view a copy of this licence, visit creativecommons.org/licenses/by/4.0/

Disclaimer: This publication may be of assistance to you but the State of Victoria and its employees do not guarantee that the publication is without flaw of any kind or is wholly appropriate for your particular purposes and therefore disclaims all liability for any error, loss or other consequence which may arise from you relying on any information in this publication.

ISBN 978-1-920742-17-1 © Design - Colourfield Design www.colourfield.com.au 2018

Wildflowers of the Plains and Low Hills of Northeastern Victoria



Wildflowers *of the Plains and Low Hills of Northeastern Victoria*



Orchids, Ferns & Sedges



Wax-lip Orchid ~
Glossodia major
CF



Dwarf Greenhood
Pterostylis nana
EC



Pink Fingers
Caladenia carnea
MT



Leopard Orchid
Diuris pardina
EC



Narrow Rock-fern
Cheilanthes sieberi
PG



Common Nardoo
Marsilea drummondii
JP



Joint-leaf Rush
Juncus holoschoenus
TD



Common Spike-sedge
Eleocharis acuta
MT



Knob Sedge
Carex inversa
IH



Poong'ort
Carex tereticaulis
PC



Hollow Rush
Juncus amabilis
PC



Finger Rush
Juncus subsecundus
CSU



Brush Wire-grass
Aristida behriana
MT



Windmill Grass
Chloris truncata
PC



Spider Grass ~
Enteropogon acicularis
CSU



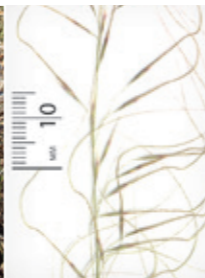
Common Wallaby-grass
Austrodanthonia caespitosa
MT



Flower CSU — Seed on 5mm grid CSU
There are 19 Wallaby Grasses in region



Rough Spear-grass
Austrostipa scabra
MT



Flower CSU — Seed on 5mm grid CSU
There are 25 Spear Grasses in region



Grey Tussock-grass
Poa sieberiana
CSU



Flower CSU — Seed on 5mm grid CSU
There are 12 native species of Poa in the region and 7 introduced species

Grasses



Rigid Panic ~
Walwhalleya prolata
CSU



Common Wheat-grass ~
Elymus scaber
MT



Warrego Summer-grass
Paspalidium jubiflorum
DK



Kangaroo Grass ~
Themeda triandra
IM



Common Swamp Wallaby-grass
Amphibromus nervosus
MT



Weeping Grass ~
Microlaena stipoides
MT

Daisies



Yellow Twin-heads ~
Eclipta platyglossa
IH



Tufted Burr-daisy
Calotis scapigera
MT



Woodland Swamp-daisy
Brachyscome basaltica var. *gracilis*
BC



Drumsticks
Pycnosorus globosus
JP



Smooth Solenogyne
Solenogyne dominii
MT



Common Everlasting
Chrysocephalum apiculatum
MT



Variable Daisy
Brachyscome ciliaris
SM



Yam Daisy ~
Microseris scapigera spp. agg.
MT



Smooth Minuria
Minuria integririma
SM



Scaly Buttons
Leptorhynchus squamatus
MT



Blue Burr-daisy
Calotis cuneifolia
IH



Woolly New Holland Daisy
Vittadinia gracilis
IM



Cotton Fireweed
Senecio quadridentatus
CA



Shiny Everlasting
Xerochrysum viscosum
MT



Lemon Beauty-heads ~
Calocephalus citreus
LR



Austral Bear's-ear ~
Cymbonotus preissianus
MT



Jersey Cudweed ~
Pseudognaphalium luteoalbum
IH



Showy Podolepis ~
Podolepis jaceoides
CF

Daisies

Other Herbs

Other Herbs

Other Herbs

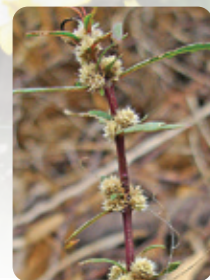
Other Herbs

Lilies

Bioregions of the Plains and Low Hills, Northeastern Victoria



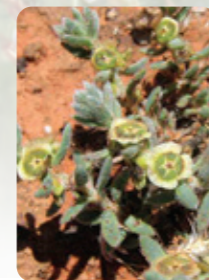
Poison Pratia
Lobelia concolor
IH



Lesser Joyweed
Alternanthera denticulata
PC



Slender Knotweed
Persicaria decipiens
IM



Dwarf Bluebush
Maireana humillima
IH



Blue Heron's-bill ~
Erodium cicutarium
IM



Rough Raspwort
Haloragis aspera
KH



Narrow Plantain
Plantago gaudichaudii
RZ



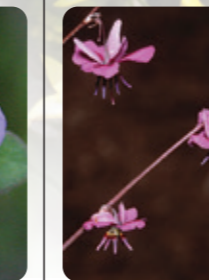
Variable Glycine
Glycine tabacina
GJ



Cut-leaf Goodenia
Goodenia pinnatifida
MT



Trailing Speedwell
Veronica plebeia
PG



Nodding Chocolate-lily
Arthropodium fimbriatum
IM



Small Vanilla-lily
Arthropodium minus
MT



Common Woodruff
Asperula conferta
IM



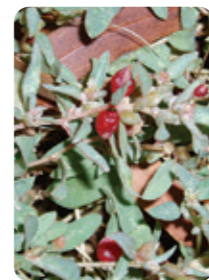
Australian Sheep's Burr
Acaena ovina
KW



Swamp Isotome
Isotoma fluviatilis
IM



Grey Germander ~
Teucrium racemosum
PG



Berry Saltbush
Atriplex semibaccata
JP



Mulla Mulla
Ptilotus exaltatus
BC



Slender Tick-trefoil
Desmodium varians
MT



Pink Bindweed ~
Convolvulus erubescens
MT



Grassland Crane's-bill
Geranium retrorsum
IM



Small-leaf Goosefoot
Chenopodium desertorum ssp. *microphyllum*
PG



Wattle Mat-rush
Lomandra filiformis ssp. *filiformis*
MT



Black-anther Flax-lily
Dianella admixta
MT



Broughton Pea
Swainsona procumbens
MT



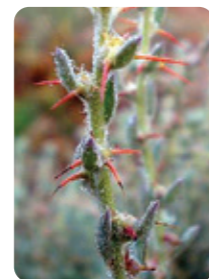
Quena
Solanum esuriale
PG



Slender Goodenia
Goodenia gracilis
IM



Variable Sida
Sida corrugata
JP



Black Roly-poly
Sclerolaena muricata
TD



Black Cotton-bush
Maireana decalvans
BT



Native Flax ~
Linum marginale
PG



Tufted Bluebell
Wahlenbergia communis
IH



Common Rice-flower
Pimelea humilis
MT



Wingless Bluebush
Maireana enchylaenoides
IH



Late-flower Flax-lily
Dianella tarda
IH



Yellow Rush-lily ~
Tricorneryn elatior
MT



Blue Devil
Eryngium ovinum
CF



Wiry Dock
Rumex dumosus
IH



Tah-vine ~
Boerhavia dominii
IH



Ruby Saltbush ~
Enchylaena tomentosa
IM



Pussy Tails
Ptilotus spathulatus
IM



Grassland Wood-sorrel
Oxalis perennans
IM



Kidney Weed ~
Dichondra repens
MT



Leafy Templetonia ~
Templetonia stenophylla
ET



Stinking Pennywort
Hydrocotyle laxiflora
RZ



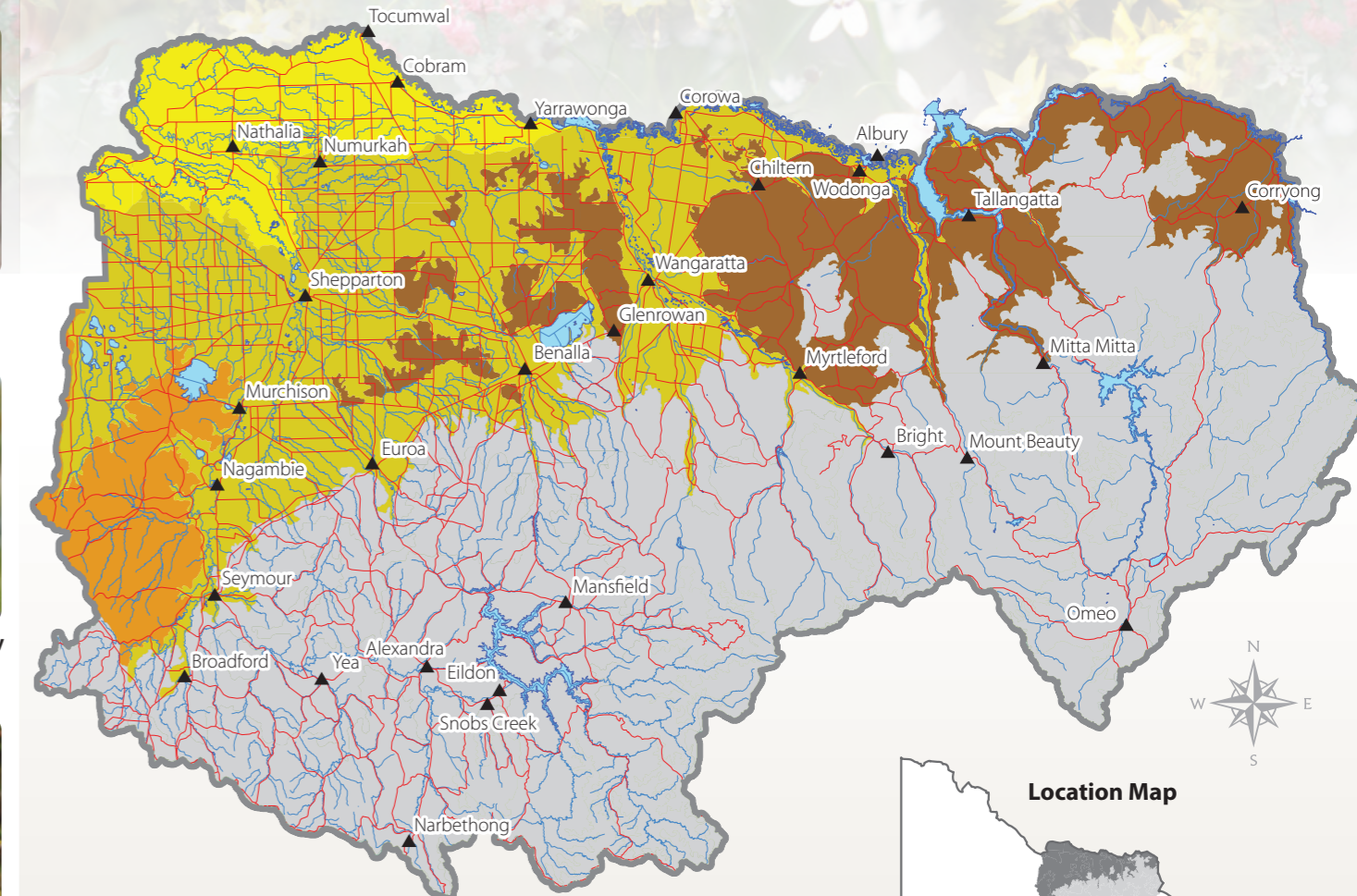
Saloop
Einadia hastata
IH



Tiny Star
Hypoxis glabella var. *glabella*
JP



Bulbine Lily
Bulbine bulbosa
MT



- WEBSITES**
 Biodiversity Information Resources and Data (BIRD) www.bird.net.au
 CSU Herbarium www.csu.edu.au/herbarium
 Environment Australia www.ea.gov.au
 FloraOnline Search: Flora Online NSW
 Greening Australia www.greeningaustralia.org.au
 Landcare Gateway www.landcarevic.org.au
 Land for Wildlife Search: Land for Wildlife Victoria
 National Herbarium of Victoria Search: National Herbarium of Victoria
 Nature Web www.natureweb.org.au
 North East SWIFFT www.swiff.net.au
 VicVeg Online www.vicveg.net.au

PHOTOGRAPHY:
 All photographs shown here (apart from Paul Gullan/Viridans Images) have been donated. The initials of the photographer/organisation are listed below each image. BC Brad Costin, BT Ben Thomas, CA Craig Allen, CF Chris Findlay, CSU Charles Sturt University Herbarium, DK David Kleinert, EC Eileen Collins, ET Environment Team DELWP Tatura, GJ Glen Johnson, IH Ian Higgins, IM Ian McCann courtesy of The State of Victoria, Department of Environment, Land Water and Planning collection, JP Joel Pike, KH Kate Hill, KW Karen Wales, LR Lyndall Rowley, MT Mary Titcumb, PC Dr Peter Curtis, PG Paul Gullan/Viridans Images, RZ Reto Zollinger, SM Sally Mann, TD Tim D'Ombrian.

Legend

- Victorian Riverina
- Murray Fans
- Goldfields
- Northern Inland Slopes
- Streambanks and Wetlands
- See "Wildflowers of the Foothills and Mountains of Northeastern Victoria"